



University of Essex

IMPATIENT FOR CHANGE?

#ImpatientEssex

Undergraduate Prospectus 2024

**Impatient to find out
what we're all about?
The best way to do it
is to come and visit.**

2023 Open Days

Colchester Open Days

- Saturday 17 June 2023
- Saturday 16 September 2023
- Saturday 28 October 2023

Southend Open Day

- Saturday 14 October 2023

2024 Open Days

Colchester Open Days

- Saturday 15 June 2024
- Saturday 21 September 2024
- Saturday 26 October 2024

Southend Open Day

- Saturday 12 October 2024

Find out more



CONTENTS

Why Essex?	4
Student showcase	6
Our Research	16
Impatient to find your new home?	38
Impatient For knowledge?	58
Impatient to take the next step?	78

WHY

ESSEX?

**Top 40 in the UK in the Complete
University Guide 2023**

**Top 40 for overall satisfaction in
the National Student Survey 2022
(Broad discipline English universities)**

Find out more about
undergraduate life
at Essex



Home to the curious, bold and brave. We're a university where vibrant, scenic campuses are home to a truly global community.

Join us in our 60th year

In 2024, we will be celebrating 60 years of Essex Impact – bringing benefits to all our communities.

The Essex Spirit

When you join Essex, you join for life. You become part of our global family and part of our creative, diverse community that is engaged and kind, and where everyone is equal. Our Essex community reaches far beyond the boundaries of our campuses. We support each other; we live and learn together; we disagree agreeably; and we develop interests and embrace values that change our lives and careers forever.

Climate Pledge

The University of Essex has committed to reaching net zero carbon emissions by 2035. We declared a Climate and Ecological Emergency on 9 December 2020. And we have already cut our emissions by 28% (from a 2005 baseline).

Financial help

From subsidising hot meals on campus to reducing the price of household groceries in our SU shops, we are committed to supporting our students as much as possible through the cost of living crisis. The last year has seen us widening our financial hardship grants to £1.5 million, removing resit fees and providing free activities and opportunities for students to come together around the university.

Global community

We provide an intimate but global setting: fusing ideas, cultures and perspectives, with internationalism at the heart of everything we do. We know the enormous value of a global view; an understanding of different people and cultures and ways of looking at the world. We engage with research and education from around the world. Our research informs our education and makes sure we are active, empathetic, and engaged global citizens.

Research mindset

Our research has an impact on the world. At Essex, you will partner with academics, taking part in and doing research that drives progress.

STUDENT SHOWCASE



Katelyn Lucas

BA Sociology and Criminology Second Year

I've always wanted to work in the police and would love to be a detective. When I was working in a petrol station as a teenager we received a threatening phone call and I'll always remember how the police handled it and how reassured I felt. I want to make change in the world so I'd like to work on the frontline and build my career so I can progress to a position where I can impact on policy and really make a difference. I'd like to do a Masters in Criminology at some point too.

I always enjoyed sociology at school, and with my aspirations to join the police force it felt obvious to me to combine sociology and criminology. My A-level tutor actually studied at Essex so I followed in her footsteps and here I am! I've loved the opportunities I've been offered and the connections I've built with not only friends but lecturers too. I got a First last year and my name is on the Dean's List which was such a proud moment for me. To have worked hard and see it pay-off is so rewarding.

If I could give someone starting their journey one piece of advice it would be to embrace it all – the opportunities, the friends, the study – all of it!

Find out more about
undergraduate life
at Essex





Aaron Henderson

BEng Robotic Engineering with a year abroad Third Year

I'm surprised at how much I've loved learning again after returning to education at the age of 30. When I started my course my plan was to do my degree as a stepping stone to get a job, but I've loved it so much I'm now looking to do a PhD! I have a strong personal interest in how technology plays a role in social development, so I'm looking to do research in this area.

I've just completed my year abroad in Canada. I found the change in environment really conducive to new thoughts and ideas which broadened my education. I'm now back at Essex for the final year of my degree and I'm so excited for what this year has in store. The lecturers and academics I've worked with have explored areas I didn't know even existed!

My plans have changed throughout my course but that's okay. If you're about to start university be open to this change, there's so much opportunity to grow and develop through your time at Essex. University has definitely made me a more rounded person; it's not just about learning academic skills, it's about growing as a person too.



Kareem McIntosh

BSc Sports Therapy Third Year

Originally I wanted to be a physiotherapist, but when I started researching degrees I found out more about sports therapy and I loved how it's still all about the human body and helping people, but more focused on sport – it's perfect for me. Eventually I'd like to run my own private clinic, so I can teach others what I've learned and help people, but work for myself.

I have so many highlights from my time at Essex, but top of the list has to be my year on placement at AFC Wimbledon. I gained so much from my time with the club; skills, technique and general experience, I'm so thankful for it. Another highlight for me was my time in Sweden over the summer, organised by Essex, working as a Sports Therapist. I worked with a prep school team in the Gothia World Cup, an international youth football tournament. Whilst at Essex I also took full advantage of their sports facilities and I even learnt a new language during my first year through the Languages For All programme. Exploring new places and learning about new cultures drives me, I'd like to work abroad once I graduate, ideally in Spain or Dubai.

What attracted me to Essex is just how diverse it is. To anyone about to start university I'd say join all the societies and clubs you can – it's how you'll make new and lifelong friends!

Find out more about
undergraduate life
at Essex





Shelly Hyde

FdA Therapeutic Communication and Therapeutic Organisations Second Year

I've spent the last few years working with vulnerable and complex adults and I've always felt that truly understanding their struggles and helping them move forward requires a therapeutic approach – then I found the Therapeutic Communication and Therapeutic Organisations course! I'm in awe of my tutors, they're so experienced in the field of psychotherapy and they've passionately helped others throughout their careers.

My course has made me feel so free, and the things I'm learning are going to help me professionally and personally. I'd like to become a Psychotherapist eventually, I've received psychotherapy myself so I'd really like to pay this back. Everybody deserves the best possible support during difficult times.

One of my favourite things about the Colchester Campus is the grounds; the lakes and the greenspaces, it's just so calming and inviting. I also love how welcoming Essex is; there are opportunities for all so you really can be whoever you want to be. Every time I arrive on campus I feel like I'm coming home.

CAREERS AND EMPLOYABILITY



We know the importance of preparing you for life after graduation, which is why we do everything we can to help you achieve your goals.

Placements

Many of our degrees offer the option of a placement year, giving you the opportunity to gain real-world experience relevant to your chosen career path. Your course will extend to four years, with year three taken in placement – in the UK or abroad. You can check our subject pages to see which courses have the option of a placement year.

Employability skills

A lot of our degrees include compulsory career modules for each year of study. This means you will have dedicated time spent on preparing you for a future career, and the opportunity to consider how your new academic skills will be useful in the world of work. Plus, many of our courses offer the option of work-based learning, immersing you in the world of work before you even graduate.

Q-Step pathways

On selected courses, you can follow a Q-Step pathway of modules within your existing course. By doing this you will graduate from Essex with a qualifier award at the end of your degree, signalling to employers your capability in highly sought after quantitative research skills.

Paid work on campus

The University and the Students' Union employ more than 1000 students on our campuses, all paid at least the Voluntary Living Wage.

Volunteering opportunities

Volunteering is at the heart of the Essex spirit. Whether it's joining the Students' Union VTeam to work on community projects; sharing your sporting knowledge with coaching; or spending a summer abroad volunteering at a placement the other side of the world! There are so many opportunities to volunteer at Essex, and aside from the enormous good you're doing for society, it will also boost your CV, helping you get recognised in the job market.

Chart My Path and The Big Essex Award

Whilst at Essex you can use Chart My Path and The Big Essex Award to complete and log extra-curricular activities, such as volunteering, to promote skills that will help you gain employment in the future. These achievements will be logged on your digital transcript.

Languages for All

Stand out to future employers with this award-winning programme that gives Essex students the opportunity to learn a language alongside their degree, for one year, at no additional cost.

Language learning will help you acquire a host of transferable skills such as effective and confident communication, and enhanced global and cultural awareness. Plus, it boosts your ability to study or work abroad, broadening your horizons and increasing your prospects.

Data science short courses

At Essex we offer our online or lab-based data science short courses for all students, at no extra cost. Adding these tools to your arsenal

is a real game changer in today's competitive job market. Being able to confidently use raw, unstructured data to determine patterns, trends and correlations in ways that inform action is a key part of working life. This gives our graduates a distinct advantage in today's competitive job market.

CareerHub

As an Essex student, you'll have access to CareerHub, a dedicated portal where you can search for jobs and internships; book on to employability events and workshops, and book careers-related appointments with our advisers. You'll also have access to CareerHub after you graduate and become an Essex Alumnus too.

Alumni loyalty discount

If you're considering postgraduate study, the door is always open for further study with us. We offer a saving of up to 33% off the first year of postgraduate study through our Alumni Loyalty Discount.

Find out more
about careers
and employability





IMPATIENT TO MAKE AN IMPACT?



Find out more about
our alumni network



Our alumni follow a variety of paths that allow them to be the change that they want to see in the world. Pamela's Essex journey is a great example.

Pamela Abiola

Why did you decide to study your course at Essex?

After completing my LLB Law degree at Essex, I decided to stay on and do a Masters in International Human Rights as I am interested in being a part of changing policies relating to Human Rights in my country of birth (Democratic Republic of Congo). I knew that Essex has a fantastic reputation for being one of the top universities in the world for Human Rights!

What did you enjoy most about your studies? Which modules or areas of research did you particularly enjoy?

I really enjoyed Refugee Law, International Child Law and, Law in Armed Conflict. I loved the teaching styles of the lecturers and the fact that most of my lecturers had first hand experience in the subject they taught.

What employability or further study skills did studying at Essex give you – and did you complete a placement whilst studying?

Essex opened the door for me to do a placement at Freedom from Torture which was advertised by one of my lecturers.

What have you done since graduating from Essex?

Since graduating, I have continued to focus on running my charity called 'Revive Congo'.

The youth in the DRC make up more than 30% of the population, however, more than seven million children between the ages of 5 and 17 are denied access to education.

How relevant is your degree to your job?

Extremely relevant as the rights of those in Congo are infringed, especially the right to education and I am thankful to be a part of the solution.

What advice would you give to someone looking for a similar role?

Research and network. Those are two things you can never do enough of.

RESEARCH



Find out more about
our latest research



Our academics are some of the biggest names in their field, and are active researchers. If you want to study with the best and challenge your own opinions to uncover the truth, welcome home.

Working alongside leading academics can set you up for a career in research. Being part of our research community will give you the support and resources needed to make a difference.

This is some of what our academics have achieved:

- **Boosting sustainable food production**
- **Improving public sector accounting in emerging countries**
- **Ensuring reconstruction efforts in Syria comply with human rights**
- **Improving working conditions for women in factories in Sri Lanka**
- **Helping the police to combat ethnic and racial harassment**
- **Improving the management of mental health at work**
- **Using historical accounts to support community work that tackles period poverty.**

OUR

CAMPUSES

The University of Essex is based at three campuses: Colchester, Southend-on-Sea and Loughton. Your course will be based at one campus location.

Colchester to:

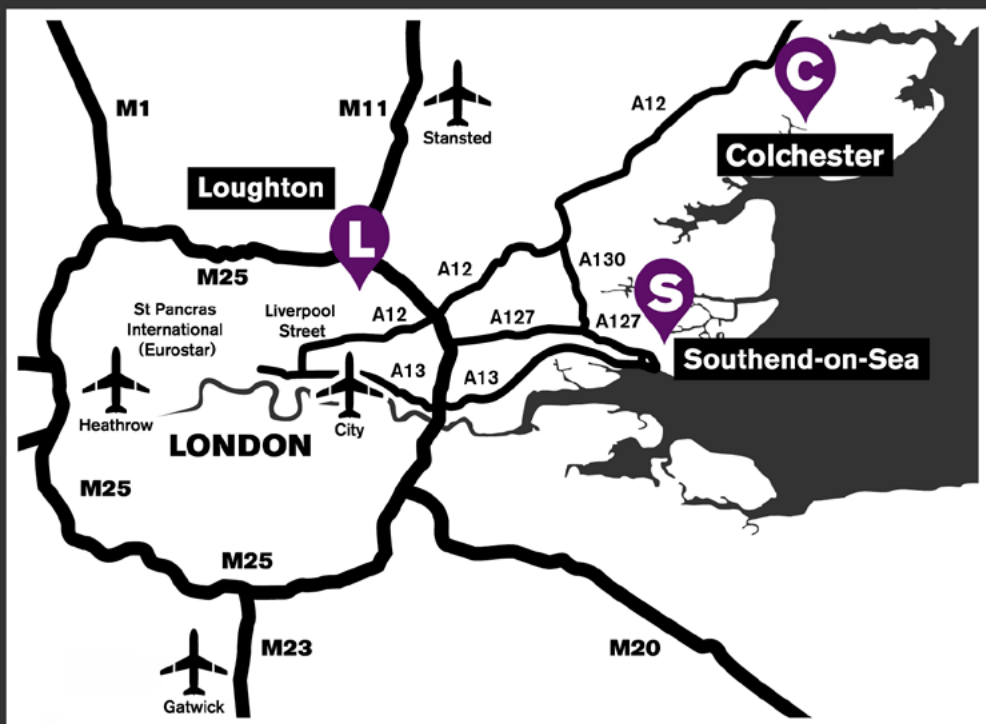
- Central London:
45 minutes to 1 hour
by train, 1 hour and
40 minutes by car.
- Stansted Airport:
1 hour and
15 minutes by bus,
50 minutes by car.
- Southend Airport:
1 hour and
15 minutes by train,
1 hour by car.
- Gatwick Airport:
1 hour and 50
minutes by train,
1 hour and 40
minutes by car.
- Heathrow Airport:
2 hours and
10 minutes by
train, 1 hour and
55 minutes by car.

Southend to:

- Central London:
45 minutes to 1 hour
by train, 1 hour and
20 minutes by car.
- Southend Airport:
15 minutes by bus,
10 minutes by car.
- Stansted Airport:
1 hour and 30
minutes by bus,
1 hour by car.
- Gatwick Airport:
2 hours by train,
1 hour and
10 minutes by car.
- Heathrow Airport:
2 hours by train,
1 hour and 20
minutes by car.

Loughton to:

- Central London:
42 minutes by train,
45 minutes by car.
- London City Airport:
40 minutes by train,
25 minutes by car.
- Stansted Airport:
1 hour and 28
minutes by train,
30 minutes by car.
- Gatwick Airport:
1 hour and 30
minutes by train,
1 hour and 20
minutes by car.
- Heathrow Airport:
40 minutes by train,
1 hour by car.



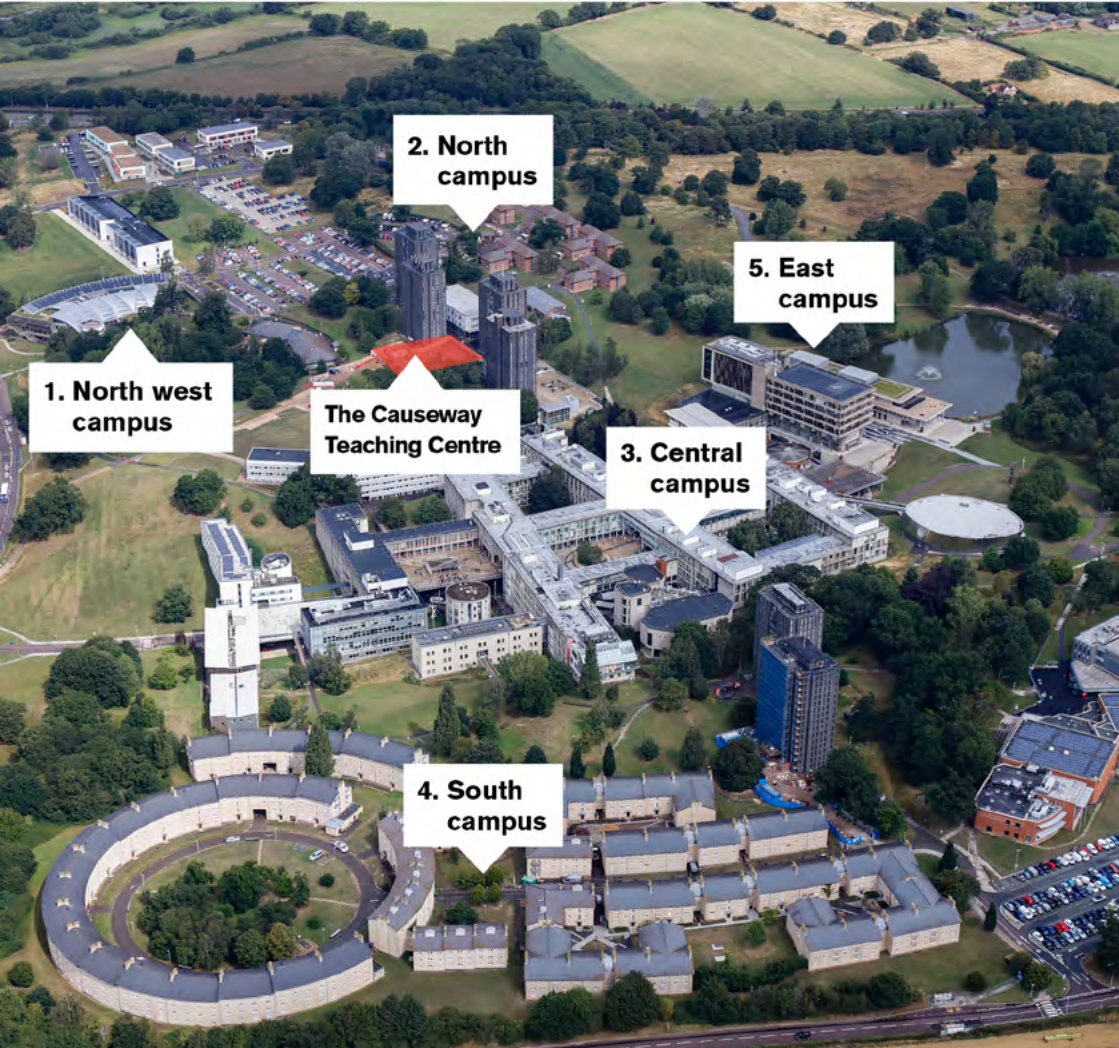
- C** Colchester
- S** Southend-on-Sea
- L** Loughton



Find out more about our campuses



COLCHESTER CAMPUS





7. Wivenhoe Park

6. South east campus

1. North west campus

- Accommodation – The Copse, The Meadows, The Pastures, The Quays
- Essex Business School
- Day Nursery
- Knowledge Gateway and Innovation Centre

2. North campus

- Accommodation – North Towers, The Houses, Wolfson Court
- Health Centre
- Teaching Centres

3. Central campus

- Lecture Theatre Building
- Academic departments
- Lecture and seminar rooms
- Students' Union
- Bars, cafés and restaurants
- Shops and Post Office

4. South campus

- Accommodation – South Towers, South Courts
- STEM Centres

5. East campus

- Ivor Crewe Lecture Hall
- Silberrad Student Centre
- SU Creative Studios
- Albert Sloman Library
- Lakeside Theatre and Café
- Parkland and lakes

6. South east campus

- Essex Sport Arena
- Sports Centre and Gym
- Synthetic turf pitch
- Tennis courts

7. Wivenhoe Park

- Wivenhoe House Hotel
- Edge Hotel School
- Essex Collection of Art from Latin America (ESCALA)
- Campus allotment
- Sports pitches and parkland

OUR COLCHESTER CAMPUS



Find out more
about life at our
Colchester Campus



Located within Wivenhoe Park, our Colchester Campus is surrounded by beautiful landscapes and with Colchester city centre just down the road it really is the perfect place to study, live and relax.

Things to do

The centre of campus is buzzing with life, from our weekly street market, to international cultural celebrations; it's a vibrant hub bringing together students and staff from over 130 countries. So whether you want to watch a film at our on-campus cinema, Cine10, compete in a pub quiz, enjoy a show at the Lakeside Theatre or dance the night away with friends at Sub Zero, our on-campus nightclub, our Colchester Campus really does have it all.

Study spaces

Enjoy stunning views of our Green Flag award-winning parkland while you get your head into your studies in The Albert Sloman Library, open 24 hours a day, seven days a week. Located right next door to the Library and sharing its beautiful views over the lakes, the Silberrad Student Centre is one of the newest buildings on campus. It has interactive private and group study spaces available for you to use alone, or with classmates.

Computers, scanners and printers are available in our IT labs across campus. Plus, with reliable WiFi across campus there are no limits on where you can study. At Essex you're free to work wherever suits you best.

Food

From artisan vegan baking through to global cuisine, there is something for everyone, local produce right on your doorstep.

Sport

We all know the positive impact exercise has on our physical health and mental wellbeing. This is why we have a wide range of sporting options for our students. Our gym, sports centre and Sport Arena are just the beginning. There's also an all-weather tennis court, 18-hole disc golf course, 5-a-side football pitches and a plethora of clubs and teams. So whether you're looking for a casual sports club or something more serious we've got you covered.

OUR COLCHESTER FACILITIES

A young man with dark hair is sitting in a black office chair at a white desk in a library. He is wearing a light-colored t-shirt and a watch on his left wrist. He is looking down at an open book on the desk, with his hands resting on the pages. He has earbuds in his left ear. To his right is a tall bookshelf filled with books, some of which are purple and yellow. In the background, there is a large window with a view of a cityscape. The overall scene is brightly lit, suggesting a modern and well-equipped study environment.

A hive of activity in the midst of tranquil parkland, with shops, restaurants, bars, a theatre and a nightclub – you'll be right at home at our Colchester Campus.

- The **Silberrad Student Centre** is a one stop shop for student support. In addition to its study pods and IT suites, it's also home to our **Student Services Hub** – your go-to place for any questions.
- Our **Sport Arena** has 1,665 seats and international standard facilities for staging televised sporting events. The Arena contains courts for a wide range of sports including basketball, badminton and volleyball.
- The **Lakeside Theatre** showcases student and professional productions. Whether you're a keen actor, interested in production or just enjoy an evening at the theatre, this is perfect for students interested in the arts.
- Essex is the world in one place, so we bring together a mix of faiths and beliefs from across the globe. Our **multi-faith space** is a place to practice or explore faith, either on campus or by connecting you to a local place of worship.
- You have access to an **NHS health centre** on campus, and if you require childcare during your time at Essex we have a **day-time nursery**.
- The **STEM Centre** includes a 180-seat wet lab for our School of Life Sciences and a learning space to enable collaboration between students in our Faculty of Science and Health.
- **Essex Business School** is the UK's first zero carbon business school building, featuring a winter garden, café, quiet study spaces and a virtual trading floor.
- We have a **functioning hospital ward** with robot patients which can simulate a range of medical conditions for our healthcare students.
- **Essex Law Clinic** offers initial legal advice to the local community. Law students have the chance to work alongside practicing lawyers and advise real clients to gain hands-on experience.
- Our **interpreting training lab** can be used to interpret conferences up to 20 people. You can use the lab as part of your studies, giving you the tools you need to become an expert interpreter.

BEYOND OUR COLCHESTER CAMPUS



Find out more about
the local area



You'll find everything you need at our Colchester Campus. When you venture into the city, or further afield. there's so much to see and do.

Arts and history

If the Arts are your thing there's Firstsite Art Gallery, The Mercury Theatre and Colchester Arts Centre, known for its intimate music and comedy gigs. As for history, we're Britain's first city, plus Colchester Castle and its surrounding park are perfect for soaking up the culture and history of the area.

Shopping

Colchester high street is home to a combination of brands, independent boutiques and charity shops. And when you need to break up the shopping with food and drink, Colchester is full of chain and independent cafés and coffee shops.

Day trips

Just the other side of the city centre is Colchester Zoo – it's an absolute must for all animal lovers. If the weather isn't looking quite so good there's Aqua Springs Spa, and Jump Street – something to suit whatever weekend mood you're in!

Nights out

Colchester is home to restaurants, pubs and bars a plenty. If you're looking for craft ales and a serious commitment to gin then Three Wise Monkeys is your place, Want somewhere more insta-worthy – check out Pavillion. Or you could dance the night away at one of the many bars with live music and DJs, or head to a concert at Castle Park.

Further afield

Our Colchester Campus is surrounded by beautiful countryside and coastline. Mersea Island, Wivenhoe and Dedham Vale are all between 10 – 30 minute journey by car/bus and are ideal places to enjoy a sunny Saturday. And if the bright lights of London are calling, you're just a 45-minute train ride to Liverpool Street.

SOUTHEND CAMPUS





1. The Forum

- The Learning Hub
- Student Services
- Public and academic library
- Lecture and seminar rooms

2. The Gateway Building

- Academic departments
- Lecture and seminar rooms
- Students' Union lounge

3. Southend Central Station

- Connections to Leigh-on-Sea, London and Lakeside Shopping Centre

4. University Square Accommodation

- Supermarket
- International shops

5. High Street

- Cinema
- Cafés and restaurants
- Post Office
- Chain stores and independent shops

6. Southend Victoria Station

- Connections to Colchester, London and Southend Airport for flights across Europe

7. Clifftown Theatre

- East 15 Acting School
- Prittlewell Square Gardens
- The Railway Hotel music venue

8. Southend Victoria Station

- Southend Pier
- Adventure Island amusement park
- Beach and promenade

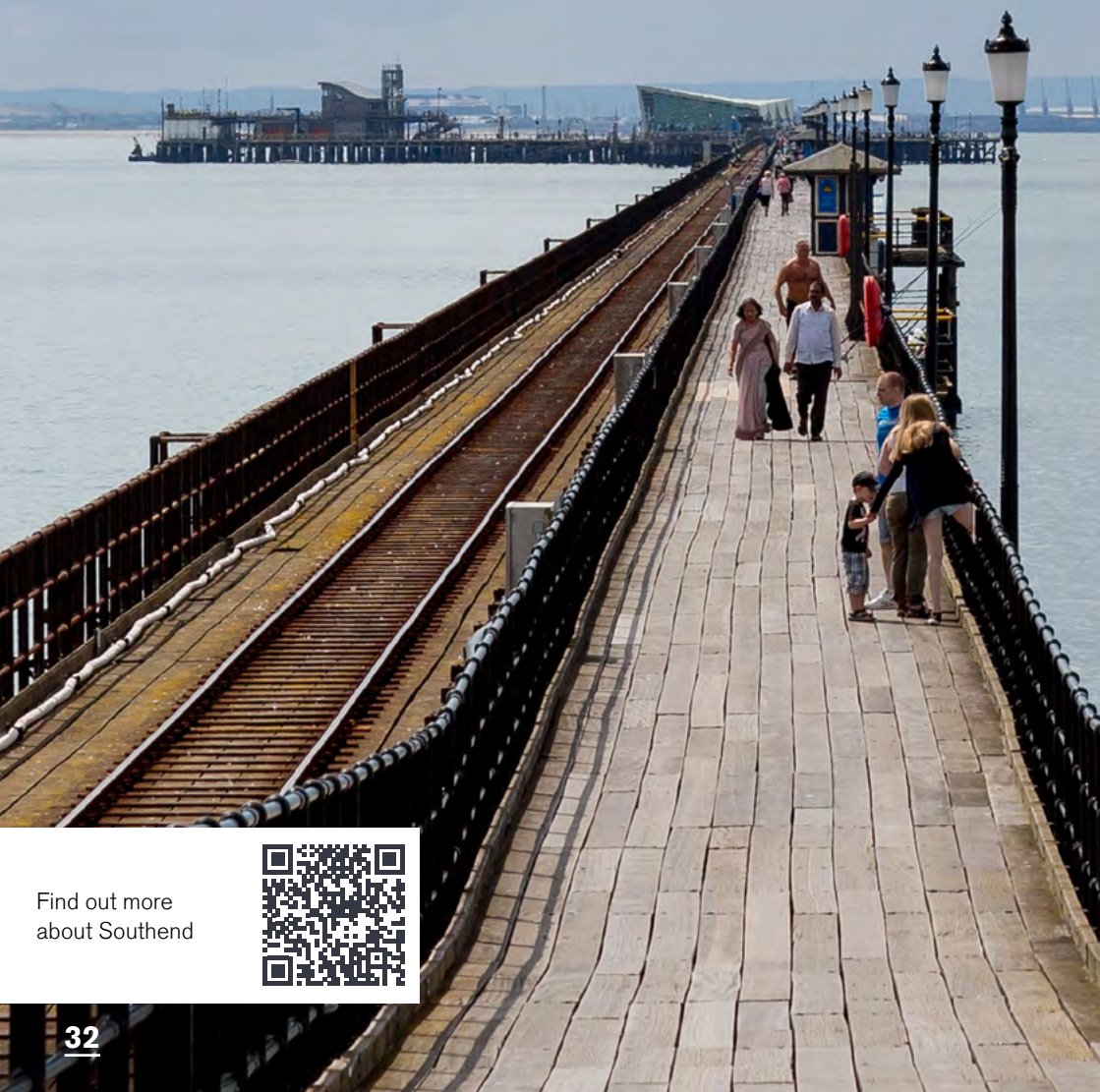
OUR SOUTHEND FACILITIES



Set on the Thames estuary with fantastic transport links, our Southend Campus is the perfect place for living and learning. The Campus is based in the heart of the city, surrounded by more than 300 places to eat, a vibrant nightlife, independent boutiques, museums, an international airport, and a seven-mile beach front!

- **The Forum** offers a 24 hour learning hub with modern study spaces and access to over 150,000 books, ideal for an all-nighter spent essay writing (not that we'd recommend it of course).
- The **SU Lounge** is great for catching up on reading, settling down with your laptop or just relaxing with a good book.
- Make the most of being in **the city centre** and find yourself a cosy corner in your favourite café to crack on with some work with a cappuccino.
- Our **Faith Centre** in **The Gateway Building** is the perfect space to practice and explore your faith.
- Set in a converted Gothic church, **Cliffdown Theatre** is home to our East 15 students and it's where they showcase their work. Whether you're a keen actor, interested in production, or just enjoy an evening at the theatre, this is the place for you.
- Our **Dental Skills lab** is equipped with phantom heads for our Oral Health Science students to practise using equipment such as ultrasonic scalars.
- Nursing students have access to a **mock ward** for practising clinical skills before placements. There is also a multi-skills lab set out like a living room and bedroom to replicate community-nursing settings, such as a care home.
- As a city-centre campus, studying in Southend gives you all the conveniences of urban living as well as university specific facilities, so you can really make the most of your time with us.

BEYOND OUR SOUTHEND CAMPUS



Find out more
about Southend



Southend seafront is a breath of fresh air. Discover a place of beautiful contrast, with bags full of character. Aside from the pier and beach to enjoy, there's also Adventure Island if you fancy a rollercoaster ride, or the aquarium for checking out some marine life.

Outdoors

Get some fresh air and explore one of Southend's many parks and nature reserves such as Prittlewell Square Gardens, next to Clifftown Theatre. It's a great alternative to the beach for enjoying the beautiful Essex sunshine.

History

If history is your thing, why not visit one of Southend's four museums and discover its history? Nearby Hadleigh Castle dates back to the thirteenth century. Though much of it has been destroyed over the centuries, the ruins provide a fascinating place to explore. Miles of seafront, ample green space and a rich heritage – and that's all before you step foot on campus!

Travel

With two train stations to choose from, both with links to London, the capital is just 50 minutes away. Whether it's a trip to the West End, a proper night out, or a shop 'til you drop Saturday, it's all just a train ride away. Plus, did someone say city break? Southend has its own airport with direct flights to Copenhagen, Ibiza, Dubrovnik and Prague to name a few.

LOUGHTON CAMPUS



Our Loughton Campus sits on the edge of North London. Just a tube ride away from the West End, but situated in the grounds of a picturesque Georgian house, our East 15 students enjoy the best of both worlds.

Facilities

Dedicated to our East 15 Acting School, the heart of our Loughton Campus is Hatfields, a beautiful Georgian house. Set in five acres of green land, the site boasts 28 rehearsal spaces, a dance studio, radio recording room, a large café and common room space, Mac editing suite, library, screening rooms and the school's own, fully equipped theatre.

Roding House contains the School's Joan Littlewood Studio Theatre, 10 rehearsal rooms, a green room, sound recording studio, video editing suite and a costume department.

Accommodation

Our Loughton students live off campus in the nearby town, giving you the flexibility to choose between a shared house, living with a landlord or letting a whole house. And don't worry about figuring it all out, our Student Services Team will be on hand to help you find the perfect home.

Notable alumni

As a graduate of East 15 Acting School and the University of Essex you're in great company. Our alumni are creating daring, pioneering, fresh, and world-famous work across stage and screen.

Here's a short list of some former students that you might recognise:

- Patricia Allison – Netflix's 'Sex Education'
- Daniel Ezra – The CW/Netflix's 'All American'
- Meng'er Zhang – Marvel's 'Shang Chi'
- Blake Harrison – C4's 'The Inbetweeners'
- Kiell Smith-Bynoe – BBC's 'Ghosts'
- Diane Morgan – Philomena Cunk, 'After Life', 'Mandy'

BEYOND OUR LOUGHTON CAMPUS

Find out more
about Loughton



North London location

It's not all work and no play in Loughton. The campus is just a five minute walk from the nearest London Underground station, Debden. Take a thirty minute ride into Central London for West End theatres, shopping, and all other mainline stations for any last minute weekend trips. The campus is situated on the edge of Epping Forest, a 6,000 acre ancient woodland, ideal for a study break in the fresh air.

The centre of Loughton is a short stroll away from campus. Treat yourself to some shopping in the independent boutiques, or ditch the pot noodle and head out to one of the many restaurants and pubs.

Nearby facilities

Home to our Stage and Production Management Department, Unit Four is a £1.5 million facility containing a large workshop, paint shop, prop department and teaching spaces. Based on the Hatfield site, the Corbett Theatre is a unique performance and learning space. The theatre is a converted barn, transformed into seating for 130 people, equipped with dressing rooms and full technical facilities. East 15 host many public performances throughout the year here, alongside lectures, rehearsals and technical classes.

IMPATIENT TO FIND YOUR NEW **HOME?**

With guaranteed on-campus accommodation* for all first-year students, bills included in your rent, and a variety of room designs to suit different budgets and needs, we've got the perfect place for you to call home.

Find out more
about accommodation
at Essex

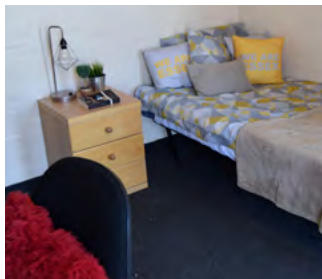


***International students (paying overseas fees) are entitled to guaranteed accommodation for the duration of their studies.**



BURPEES AND BRUNCH

THE TOWERS



NORTH



North Towers

- Cost per week: £109.90
- Location: Colchester Campus
- Shared bathroom facilities
- 2 minute walk to central campus
- 5–14 rooms per flat

SOUTH



South Towers

- Cost per week: £116.76
- Location: Colchester Campus
- Shared bathroom facilities
- 2 minute walk to central campus
- 5–16 rooms per flat
- Newly refurbished (enhanced)

THE HOUSES



Cost per week: £157.57–£171.15



- Location: Colchester Campus
- En suite facilities
- 5 minute walk to central campus
- 4–6 students per flat
- Adapted, twin, newly refurbished (enhanced) and premium (bigger bed) rooms available

WOLFSON COURT



Cost per week: £119.84

- Location: Colchester Campus
- Shared bathroom facilities
- 5 minute walk to central campus
- 7 rooms per flat
- Hand basin in your room

SOUTH COURTS



Cost per week: £173.60–£179.62

- Location: Colchester Campus
- En suite facilities
- 5 minute walk to central campus
- 4–14 rooms per flat
- Adapted, twin, newly refurbished (enhanced) and premium (bigger bed) rooms available

THE MEADOWS



Cost per week: £170.52–£213.85

- Location: Colchester Campus
- Shared and en suite bathroom facilities depending on flat
- 10 minute walk to central campus
- 5–12 rooms per flat
- Premium rooms (bigger bed) and self-contained apartments available

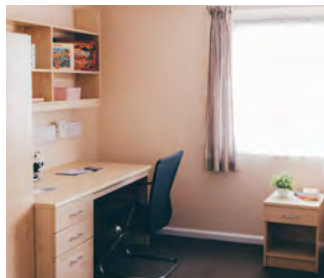
THE COPSE



Cost per week: £183.75–£215.46

- Location: Colchester Campus
- En suite facilities
- 10 minute walk to central campus
- 4–12 rooms per flat
- Studios and adapted rooms available
- Premium rooms (bigger bed) and premium plus rooms (bigger bed and more space) available

THE QUAYS



Cost per week: £163.03–£232.89

- Location: Colchester Campus
- En suite facilities
- 15 minute walk to central campus
- 4–8 rooms per flat
- Premium rooms (bigger bed), double rooms and self-contained apartments available

UNIVERSITY SQUARE



Cost per week: £152.67–£208.25

- Location: Southend Campus
- En suite facilities
- 5 minutes from main university buildings and the city centre
- 11 rooms per flat
- Studio rooms and adapted studios available

THE PASTURES



For Autumn 2023 we are launching The Pastures. Over 1,200 brand new rooms for you to call home.



Cost per week: £151.55–£213.57

Options for these include:

- 285 standard rooms (single rooms sharing a bathroom – two per bathroom)
- 919 ensuite rooms
- 58 studios

These images are CGI representations of The Pastures as building work was still underway at the time of publication.

THE DETAILS

All first year students are guaranteed accommodation.

Just make sure you've had your place confirmed, accepted your academic offer, any conditions have been met, your application is received by the deadline and you've accepted your accommodation offer.

If you're an international student (paying overseas fees) then you're entitled to guaranteed accommodation for the duration of your course.

Living on campus

Your rent includes: Wi-Fi, heating, hot water, contents insurance, electricity and the cleaning of communal areas so regardless of what happens to supplier costs, you'll be fine with Essex. On our Colchester Campus, an Essex Sport Silver membership package is also included.

Rooms are normally let for the full academic year from late September to the end of June, so if you're away during the winter and spring vacations, you don't have to remove your things from your room.

We also offer: single gender flats, adapted rooms, self-contained accommodation for single or double occupancy, shared twin en suite rooms and studios.

We cannot guarantee accommodation for first year students who are accompanied by a partner, but we'll do our very best to help. Please contact us as early as possible about this.

askthehub@essex.ac.uk

Settling in

You'll have a Residents' Assistant based in your university accommodation who'll meet you soon after you arrive. Their job is to make sure that you have opportunities to get involved in university life and social activities, and provide support outside of office hours.

Living nearby

The Students' Union offers a house-finding service, SU Homes, from our Colchester Campus. They provide support for everyone moving off campus including helping you to find your ideal property, and completing property and landlord checks to ensure your safety.

Where price variations are shown, the price varies depending on the spec of the room (en-suite, premium etc.) and the number of rooms in the flat. The costs shown are the 2023-24 costs per week. It's likely that our rental charges for 2024-25 will increase from these amounts.

IMPATIENT TO EXPLORE ESSEX?

Essex offers a thriving community, with a huge range of activities, support and opportunities. This ensures that your time with us is a rich and colourful life chapter. From championing mental health through to winning on the playing field, take a look at the sports, services and societies available to every student.

Find out more
about life outside
the classroom





STUDENTS' UNION



Find out more about
our SU



The Students Union is run for students, by students. All Essex students are members, so you can always be heard and have your say.

On campus

At the Colchester Campus our SU run shops, cafés, bars, a nightclub and restaurants. If you're based in Southend you can grab a coffee, play Xbox or PlayStation and chill out between lectures at the SU Lounge.

Get involved

At Essex, we want you to challenge everything and push yourself, but why stop in the classroom? Our SU offers membership to over 100 societies, catering to every taste. Plus if we really don't have a group for you, we'll help you set up your own.

Southend Campus

For those looking at Southend, the new SU Lounge is fully run and owned by students and is the ideal place to catch up with friends. This is your home-from-home, for studying, grabbing a cappuccino, a bite to eat, or just hanging out between classes.

Loughton Campus

Loughton boasts everything from coffee events in the Student's Union Corbett Theatre Café through to membership to 'Just Play' our informal sports clubs.

And that's not all...

We make sure you are never bored with activities day and night to keep you occupied. Our cinema shows the latest films, we have quizzes in the bar and open forums for heated debates.

SPORT AT ESSEX



Find out more about
sport at Essex



We are committed to offering sport for everyone. Whatever your level or interest, we'll help you play to your strengths.

Colchester facilities

Covering 50 acres, our outdoor sports area includes an 18-hole disc golf course and all-weather tennis courts, plus there's plenty of space to have a kick about with friends or enjoy a run around the lakes. There's also our Sport Arena, built to international sporting standards. It boasts seating for 1,655 spectators and includes 20 courts for basketball, netball, volleyball, badminton and futsal.

Southend facilities

As a student at our Southend Campus you're bang in the centre of Southend with access to a vast range of activities. Kitesurfing and swimming are a stone's throw away if you can brave the cold! Plus, our exclusive arrangement with Simply Gym in Southend offers you 24/7 access to the gym equipment and fitness classes so you can keep fit around your studies at a time to suit you.

Gym and fitness classes

Our on-campus gym in Colchester is our most popular sporting facility, with 160 workout stations and more than 100 fitness classes per week – that's enough to keep you busy whether you're a gym newbie or a seasoned workout pro!

Impatient to try something new?

If you want to try a new sport but don't fancy joining a team, no worries! Active Campus sessions are open to all and free for Essex Sport members. They're a great way to dip your toe in the workout water without committing to regular training. Plus, our 'Learn To' courses are ideal if you want to try a new activity.

Sports teams

Our Students' Union is home to the Essex Blades – over 40 sports clubs who compete locally and nationally. Be warned, you're highly likely to develop a strong allegiance to the Blades!

Sport placements and bursaries

If sport is more than a hobby to you, welcome home. At Essex we can support your personal development, offering coaching opportunities in an official or volunteer capacity. We also offer work placements within Essex Sport, plus our strong partnerships with sports organisations and national governing bodies mean we can help build your CV with practical sporting experiences. Sports bursaries worth up to £3,000 a year are also available.

IMPATIENT FOR ADVENTURE?



Find out more about
study abroad



Your chances to explore new places, cultures and languages are finally opening up. We offer opportunities to study or work abroad and/or learn a new language alongside your studies at no extra cost.

Study Abroad

You can study, work or volunteer at one of our partner institutions around the world. If you're a visiting study abroad student, come and experience academic life in the UK, the Essex way.

Studying or working abroad gives you the chance to immerse yourself in another culture, develop your independence and boost your confidence, giving you an enormous advantage when you enter the global job market.

Want to travel the world as part of your degree? Most of our courses have study abroad options, where you can complete an additional year, or term, of your course at a partner university. We offer year abroad placement opportunities too! Courses with the option for a study abroad year have a **Y** symbol on our course listings.

Languages for All

Want to stay closer to home – how about learning a language whilst at Essex? Our Languages for All programme gives you the chance to learn a language alongside your studies, for a year, with no additional fee – so why not?

SUPPORT SERVICES



Find out more about
support at Essex



Our Student Services Hub is a one-stop-shop for practical advice and confidential guidance on everything from accommodation to how to cope with homesickness.

Student services

From being able to chat to someone in confidence to gaining practical advice, our Student Services Hub is your go to place for help with health, wellbeing, finance and more.

Access and disability

If you have a disability, medical condition or specific learning difficulty, a specialist adviser will be on hand to talk you through alternative exam arrangements, lecture recordings, assistive software, access and more. You'll also have a specific contact within your department and an SU Disabled Students' Officer to represent you.

Mental and emotional health

Our Student Wellbeing and Inclusivity Service is here to help – you can access our drop-in service without making an appointment. We also offer counselling with a partner organisation that you can access via telephone or Zoom. We run workshops and seminars on topics such as managing study-related stress and anxiety, and can refer students to specialist services when needed.

Mature students

Many of our students are mature students, so we have a real understanding of the challenges that come when combining studies with other responsibilities. Meeting other mature students is a great support, so at Essex we organise welcome events, specifically for mature students.

Commuting students

We have many students living in the local area and beyond who make the daily trip to campus. It's important to know that everything on campus is for you too, and that you can join in university life to the full. Lockers, showers and study rooms are all available on campus. When studying at home you will have access to a wide range of study materials via your online student portal, including teaching materials created by your Essex tutors.

For a full breakdown of support services, including information for care leaver students, estranged students, student carers and students with children, visit our website.

FOUNDATION YEARS



Find out more about
Essex Pathways



For UK and EU applicants we offer degrees with a foundation year, so whatever your educational background you have a future with us.

Don't have the standard qualifications required to enter the first year of our undergraduate courses? No need to worry. Our degrees with a foundation year will help improve your academic skills and subject knowledge. Once you successfully complete the foundation year, you'll be fully prepared for undergraduate study and guaranteed a place on the first year of your degree.

Typically, courses with a foundation year require 72 UCAS points from at least 2 A-levels, with some courses having additional requirements. We consider every application for a degree with a foundation year on its merits so please do get in touch. You can see which of our degrees are available with a foundation year on the subjects list, just look out for a **F** symbol.

Further information regarding entry requirements for our courses with a foundation year are available on our course web pages.

[essex.ac.uk/subjects](https://www.essex.ac.uk/subjects)

IMPATIENT

FOR KNOWLEDGE?

From biochemistry to philosophy, and robotic engineering to drama, we've got the courses for you to flourish.

The information on the following pages outlines our A-level entry requirements but we consider a wide range of qualifications including international equivalents, BTECs, and QAA-approved Access to HE Diplomas. For more information please visit our website or get in touch with our Admissions Team.

Find out more about
all our courses





Accounting

Course name	A-level entry	Specific A-levels	Specific GCSEs	Available course options
BSc Accounting	ABB	—	✓	F Y P
BSc Accounting and Finance	ABB	—	✓	F Y P
BSc Accounting and Management	ABB	—	✓	F Y P
BSc Accounting with Economics	ABB	—	✓	F Y P
Integrated Master in Accounting: Accounting and Finance	AAB	—	✓	Y P

Acting, producing and stage management

Course name	A-level entry	Specific A-levels	Specific GCSEs	Available course options
BA Acting*	CDD	—	—	—
BA Acting (International)*	CDD	—	—	—
BA Acting and Community Theatre*	CDD	—	—	—
BA Acting and Physical Theatre*	CDD	—	—	—
BA Acting and Stage Combat*	CDD	—	—	—
BA Stage and Production Management**	CDD	—	—	—
BA World Performance*	BBC	—	—	—
BA Creative Producing (Theatre and Short Film)**	BCC	—	—	—
Cert HE Acting and Theatre Arts*	E	—	—	—

* Compulsory audition required

** Compulsory interview required

Actuarial science

Course name	A-level entry	Specific A-levels	Specific GCSEs	Available course options
BSc Actuarial Science	ABB	✓	—	F Y P
Integrated Master in Science: Actuarial Science and Data Science	AAB	✓	—	—



Find out more

Key (Available course options)

F	Y	P	4
Foundation year option	Year abroad option	Placement year option	Compulsory year abroad

See specific subject requirements online.

American studies (US)

Course name	A-level entry	Specific A-levels	Specific GCSEs	Available course options
BA American Studies (United States)	ABB	—	—	F Y P
BA American Studies (United States) with Film	ABB	—	—	F Y P
BA Criminology and American Studies	ABB	—	—	F Y P

Art history

Course name	A-level entry	Specific A-levels	Specific GCSEs	Available course options
BA Art History	ABB	—	—	F Y P
BA Art History and History	ABB	—	—	F Y P
BA Film Studies and Art History	ABB	—	—	F Y P
BA Literature and Art History	ABB	—	—	F Y P
BA Philosophy and Art History	ABB	—	—	F Y P
BA Curating	ABB	—	—	F Y P
BA Art History, Visual Culture and Media Studies	ABB	—	—	F Y P
BA Curating with Politics	ABB	—	—	F Y P
BA Curating with History	ABB	—	—	F Y P
BA Art History, Heritage and Museum Studies	ABB	—	—	F Y P
BA Curating, Heritage and Human Rights	ABB	—	—	F Y P
BA Art History and Modern Languages	ABB	*	—	F 4 P
BA Art History with Modern Languages	ABB	*	—	F 4 P
BA Art History with Language Studies	ABB	*	—	F
BA Art History and Language Studies	ABB	*	—	F
Integrated Master in Art History	AAB	—	—	Y P

* If Portuguese is taken as the major language, A-level pass (or equivalent) in Italian, French, Spanish or Portuguese or first language level fluency in Italian, French, Romanian or Spanish is required.

Biochemistry

Course name	A-level entry	Specific A-levels	Specific GCSEs	Available course options
BSc Biochemistry	BBB	✓	✓	F Y P
Integrated Master in Science: Biochemistry and Biotechnology	ABB	✓	✓	Y P

Biological sciences

Course name	A-level entry	Specific A-levels	Specific GCSEs	Available course options
BSc Biological Sciences	BBB	✓	✓	F Y P
BSc Ecology and Environmental Biology	BBB	✓	✓	F Y P
BSc Global Sustainability	BBB	✓	✓	F Y P
BSc Human Biology	BBB	✓	✓	F Y P

Biomedical science

Course name	A-level entry	Specific A-levels	Specific GCSEs	Available course options
BSc Biomedical Sciences	BBB	✓	✓	F P
BSc Applied Biomedical Science (NHS placement)	BBB	✓	✓	4P
Integrated Master in Science: Biomedical Science	ABB	✓	✓	Y P

Find out more



Key (Available course options)

F	Y	P	4P
Foundation year option	Year abroad option	Placement year option	Compulsory placement

See specific subject requirements online.

Business and management

Course name	A-Level entry	Specific A-levels	Specific GCSEs	Available course options
BA Business Administration	ABB	—	✓	F Y P
BSc Business Management	ABB	—	✓	F Y P
BSc Management and Marketing	ABB	—	✓	F Y P
BSc International Business and Finance	ABB	—	✓	F Y P
BSc International Business and Entrepreneurship	ABB	—	✓	F Y P
BSc Business Administration and Supply Chain Management	ABB	—	✓	F Y P
BA Business Management and Modern Languages	ABB	*	✓	Y
BA Business Management with a Modern Language	ABB	*	✓	Y
BA Business Management and Language Studies	ABB	*	✓	—
BSc Business and Human Resource Management ^{***}	ABB	—	✓	F Y P
Integrated Master in Management: Marketing and Management	AAB	—	✓	—

* If Portuguese is taken as the major language, A-level pass (or equivalent) in Italian, French, Spanish or Portuguese or first language level fluency in Italian, French, Romanian or Spanish is required.

** Subject to approval

Childhood studies

Course name	A-level entry	Specific A-levels	Specific GCSEs	Available course options
BA Childhood Studies	BBC	—	—	F Y P

Computer science

Course name	A-level entry	Specific A-levels	Specific GCSEs	Available course options
BSc Computer Games	ABB	—	✓	F Y P
BEng Computer Networks	ABB	—	✓	F Y P
BSc Computer Science	ABB	—	✓	F Y P
BEng Computer Systems Engineering	ABB	—	✓	F Y P
BEng Computers with Electronics	ABB	—	✓	F Y P
BSc Artificial Intelligence	ABB	—	✓	F Y P
Integrated Master in Science: Computer Science	AAB	—	✓	P

Creative writing

Course name	A-level entry	Specific A-levels	Specific GCSEs	Available course options
BA Creative Writing	ABB	✓	—	F Y P
Integrated Master in Literature: Creative Writing	AAB	✓	—	—

Criminology

Course name	A-level entry	Specific A-levels	Specific GCSEs	Available course options
BA Criminology	ABB	—	—	F Y P
BA Criminology with Social Psychology	ABB	—	—	P
BA Criminology with Counselling Skills	ABB	—	—	P
BA Criminology with Criminal Law	ABB	—	—	P
BA Sociology and Criminology	ABB	—	—	F Y P
Integrated Master in Sociology: Criminology	AAB	—	—	Y P

Data analytics

Course name	A-level entry	Specific A-levels	Specific GCSEs	Available course options
BSc Data Science and Analytics	ABB	✓	—	F Y P
BSc Statistics	ABB	✓	—	F Y P
Integrated Master in Science: Mathematics and Data Science	AAB	✓	—	—
Integrated Master in Science: Actuarial Science and Data Science	AAB	✓	—	—

Drama

Course name	A-level entry	Specific A-levels	Specific GCSEs	Available course options
BA Drama	ABB	✓	—	F Y P
BA Drama and Literature	ABB	✓	—	F Y P
BA Film and Drama	ABB	✓	—	F Y P
BA Drama and Creative Writing	ABB	✓	—	F Y P
Integrated Master in Literature: Drama and Scriptwriting	AAB	✓	—	—



Find out more

Key (Available course options)

F	Y	P	4
Foundation year option	Year abroad option	Placement year option	Compulsory year abroad

See specific subject requirements online.

Economics

Course name	A-level entry	Specific A-levels	Specific GCSEs	Available course options
BA Economics	ABB	—	✓	F Y P
BSc Economics	ABB	—	✓	F Y P
BA Financial Economics	ABB	—	✓	F Y P
BSc Financial Economics	ABB	—	✓	F Y P
BA International Economics	ABB	—	✓	F Y P
BSc International Economics	ABB	—	✓	F Y P
BA Management Economics	ABB	—	✓	F Y P
BSc Management Economics	ABB	—	✓	F Y P
BSc Economics with Data Science	ABB	—	✓	F Y P
BA Economics with Psychology	ABB	—	✓	F Y P
BSc Economics with Psychology	ABB	—	✓	F Y P
BA Economics with Language Studies	ABB	*	✓	F
BSc Economics with Mathematics	ABB	✓	—	F Y P
BA History and Economics	ABB	—	✓	F Y P
BA Financial Economics and Accounting	ABB	—	✓	F Y P
BA Business Economics	ABB	—	✓	F Y P
BA Economics with a Modern Language	ABB	*	✓	4
Integrated Master in Economics: Economics	AAB	—	✓	Y P
Integrated Master in Economics: Financial Economics	AAB	—	✓	Y P
Integrated Master in Economics: International Economics	AAB	—	✓	Y P
Integrated Master in Economics: Management Economics	AAB	—	✓	Y P

* If Portuguese is taken as the major language, A-level pass (or equivalent) in Italian, French, Spanish or Portuguese or first language level fluency in Italian, French, Romanian or Spanish is required.

Engineering

Course name	A-level entry	Specific A-levels	Specific GCSEs	Available course options
BEng Electronic Engineering	ABB	✓	✓	F Y P
BEng Communications Engineering	ABB	✓	✓	F Y P
BEng Robotic Engineering	ABB	✓	✓	F Y P
BEng Mechatronic Systems	ABB	✓	✓	F Y P
BEng Neural Engineering with Psychology	ABB	—	✓	F Y P
Integrated Master in Engineering: Electronic Engineering	AAB	✓	✓	P
Integrated Master in Engineering: Communications Engineering	AAB	✓	✓	—

English language and linguistics

Course name	A-level entry	Specific A-levels	Specific GCSEs	Available course options
BA Teaching English as a Foreign Language (TEFL)	ABB	—	—	F Y P
BA English Language and Linguistics	ABB	—	—	F Y P
BA English Language and Literature	ABB	—	—	F Y P
BA Linguistics	ABB	—	—	F Y P
BA English Language with Media Communication	ABB	—	—	F Y P
BA Linguistics with Data Science	ABB	—	✓	F Y P
BA Language Studies and Linguistics	ABB	*	—	F
BA Modern Languages and Linguistics	ABB	*	—	F 4
BA Journalism and English Language	ABB	✓	—	Y

Entrepreneurship

Course name	A-level entry	Specific A-levels	Specific GCSEs	Available course options
BSc International Business and Entrepreneurship	ABB	—	✓	F Y P



Find out more

Key (Available course options)

F	Y	P	4
Foundation year option	Year abroad option	Placement year option	Compulsory year abroad

See specific subject requirements online.

Environment

Course name	A-level entry	Specific A-levels	Specific GCSEs	Available course options
BSc Global Sustainability	BBB	✓	✓	F Y P
BSc Ecology and Environmental Biology	BBB	✓	✓	F Y P

European studies

Course name	A-level entry	Specific A-levels	Specific GCSEs	Available course options
BA European Studies	ABB	—	—	F Y P
BA European Studies with French	ABB	—	—	F Y P
BA European Studies with German	ABB	—	—	F Y P
BA European Studies with Italian	ABB	—	—	F Y P
BA European Studies with Spanish	ABB	—	—	F Y P
BA European Studies and Modern Languages	ABB	*	—	F 4
BA European Studies and Language Studies	ABB	*	—	F

Film studies

Course name	A-level entry	Specific A-levels	Specific GCSEs	Available course options
BA Film Studies	ABB	✓	—	F Y P
BA Film and Creative Writing	ABB	✓	—	F Y P
BA Film Studies and Literature	ABB	✓	—	F Y P

Finance and banking

Course name	A-level entry	Specific A-levels	Specific GCSEs	Available course options
BSc Banking and Finance	ABB	—	✓	F Y P
BSc Finance	ABB	—	✓	F Y P
BSc Finance and Management	ABB	—	✓	F Y P
BSc Accounting and Finance	ABB	—	✓	F Y P
BSc International Business and Finance	ABB	—	✓	F Y P
Integrated Master in Accounting: Accounting and Finance	AAB	—	✓	Y P

* If Portuguese is taken as the major language, A-level pass (or equivalent) in Italian, French, Spanish or Portuguese or first language level fluency in Italian, French, Romanian or Spanish is required.

Genetics

Course name	A-level entry	Specific A-levels	Specific GCSEs	Available course options
BSc Genetics	BBB	✓	✓	F Y P

Global studies

Course name	A-level entry	Specific A-levels	Specific GCSEs	Available course options
BA Global Studies	ABB	—	—	F Y P
BA Global Studies with Politics	ABB	—	—	F Y P
BA Global Studies with Human Rights	ABB	—	—	F Y P
BA Social Change	ABB	—	—	F Y P
BA Global Studies with Business Management	ABB	—	—	F Y P
BA Global Studies with Latin American Studies	ABB	—	—	F Y P
BA Global Studies and Latin American Studies	ABB	—	—	F Y P
BA Global Studies with Sustainability	ABB	—	—	F Y P
BA Global Studies and Modern Languages	ABB	*	—	4
BA Global Studies and Language Studies	ABB	*	—	F

* If Portuguese is taken as the major language, A-level pass (or equivalent) in Italian, French, Spanish or Portuguese or first language level fluency in Italian, French, Romanian or Spanish is required.

Find out more



Key (Available course options)

F	Y	P
Foundation year option	Year abroad option	Placement year option

See specific subject requirements online.

History

Course name	A-level entry	Specific A-levels	Specific GCSEs	Available course options
BA History	BBB	—	—	F Y P
BA History and Criminology	BBB	—	—	F Y P
BA History and Literature	BBB	—	—	F Y P
BA History and Sociology	BBB	—	—	F Y P
BA History with Film Studies	BBB	—	—	F Y P
BA History with Human Rights	BBB	—	—	F Y P
BA Modern History	BBB	—	—	F Y P
BA Modern History and International Relations	BBB	—	—	F Y P
BA Modern History and Politics	BBB	—	—	F Y P
BA History and Heritage	BBB	—	—	F Y P
BA History and Law	BBB	—	—	F Y P
BA History and Drama	BBB	—	—	F Y P
Integrated Master in History: History	ABB	—	—	Y P

Hospitality and events management

Course name	A-level entry	Specific A-levels	Specific GCSEs	Available course options
BA Hotel Management (two-year accelerated)	CCC	—	✓	—
BA Hotel Management (nine-month top-up)	*	*	*	—
BA Events Management with Hospitality (two-year accelerated)	CCC	—	✓	—
BA Events Management with Hospitality (nine-month top-up)	*	*	*	—
BA Hospitality Management	CCC	—	✓	Y
BA Events Management	CCC	—	✓	Y
FdA Hospitality Management	CC	—	✓	—
FdA Events Management	CC	—	✓	—

* See information online

Human rights

Course name	A-level entry	Specific A-levels	Specific GCSEs	Available course options
BA Curating, Heritage and Human Rights	ABB	—	—	F Y P
BA Philosophy with Human Rights	ABB	—	—	F Y P
BA Politics with Human Rights	ABB	—	—	F Y P
BA Sociology with Human Rights	ABB	—	—	Y P
BA Global Studies with Human Rights	ABB	—	—	F Y P
BA History with Human Rights	ABB	—	—	F Y P
BA Social Anthropology with Human Rights	ABB	—	—	Y P
BA Journalism with Human Rights	ABB	✓	—	—
LLB Law with Human Rights	ABB	✓	—	—

Journalism

Course name	A-level entry	Specific A-levels	Specific GCSEs	Available course options
BA Multimedia Journalism	ABB	✓	✓	Y P
BA Journalism and Criminology	ABB	✓	—	Y P
BA Journalism and Sociology	ABB	✓	—	Y P
BA Journalism and English Language	ABB	✓	—	Y P
BA Journalism and Literature	ABB	✓	—	Y P
BA Journalism with Human Rights	ABB	✓	—	Y P
BA Journalism and Politics	ABB	✓	—	Y P
BA Film and Journalism	ABB	✓	—	F Y P
BA Journalism and Modern Languages	ABB	✓	—	4



Find out more

Key (Available course options)

F	Y	P	4
Foundation year option	Year abroad option	Placement year option	Compulsory year abroad

See specific subject requirements online.

Law

Course name	A-level entry	Specific A-levels	Specific GCSEs	Available course options
LLB Law	ABB	✓	—	F Y P
LLB Law with Human Rights	ABB	✓	—	F Y P
LLB Law with Philosophy	ABB	✓	—	F Y P
LLB Law with Politics	ABB	✓	—	F Y P
LLB Law with Business	ABB	✓	—	F Y P
LLB Law with Criminology	ABB	✓	—	F Y P
LLB Law with Literature	ABB	✓	—	F Y P
LLB Law with History	ABB	✓	—	F Y P
LLB Law with Finance	ABB	✓	✓	F Y P
LLB English and French Law (Licence)	ABB	✓	—	—
Integrated Master in Law: Law	AAB	✓	—	Y P
LLB Law (Senior Status)	*	*	*	—

* See information online

Liberal arts

Course name	A-level entry	Specific A-levels	Specific GCSEs	Available course options
BA Liberal Arts	ABB	—	—	F Y P
BA Social Change	ABB	—	—	F Y P

Literature

Course name	A-level entry	Specific A-levels	Specific GCSEs	Available course options
BA English and United States Literature	ABB	✓	—	F Y P
BA English Literature	ABB	✓	—	F Y P
BA Literature and Sociology	ABB	✓	—	F Y P
BA Literature and Creative Writing	ABB	✓	—	F Y P
BA English and Comparative Literature	ABB	✓	—	F Y P
Integrated Master in Literature: Literature	AAB	✓	—	—
Integrated Master in Literature: Literature and Creative Writing	AAB	✓	—	—

Marine biology

Course name	A-level entry	Specific A-levels	Specific GCSEs	Available course options
BSc Marine Biology	BBB	✓	✓	F Y P
Integrated Master in Science: Tropical Marine Biology	ABB	✓	✓	Y P

Marketing

Course name	A-level entry	Specific A-levels	Specific GCSEs	Available course options
BSc Marketing	ABB	—	✓	F Y P
BSc Management and Marketing	ABB	—	✓	F Y P
Integrated Master in Management: Marketing and Management	AAB	—	✓	Y P

Mathematics

Course name	A-level entry	Specific A-levels	Specific GCSEs	Available course options
BSc Mathematics	ABB	✓	—	F Y P
BSc Economics and Mathematics	ABB	✓	—	F Y P
BSc Finance and Mathematics	ABB	✓	—	F Y P
BSc Mathematics with Computing	ABB	✓	—	F Y P
BSc Mathematics with Physics	ABB	✓	—	F Y P
Integrated Master in Science: Mathematics and Data Science	AAB	✓	—	—
Integrated Master in Mathematics: Mathematics	AAB	✓	—	—

Find out more



Key (Available course options)

F	Y	P	4
Foundation year option	Year abroad option	Placement year option	Compulsory year abroad

See specific subject requirements online.

Modern languages

Course name	A-level entry	Specific A-levels	Specific GCSEs	Available course options
BA Modern Languages	ABB	*	—	F 4
BA Modern Languages and English Language	ABB	*	—	F 4
BA Modern Languages and Linguistics	ABB	—	—	F 4
BA Modern Languages and Teaching English as a Foreign Language	ABB	*	—	F 4
BA Modern Languages with Latin American Studies	ABB	*	—	F 4
BA French Studies and Modern Languages	ABB	*	—	F 4
BA German Studies and Modern Languages	ABB	*	—	F 4
BA Spanish, Portugese and Brazillian Studies	ABB	*	—	F 4
BA Journalism and Modern Languages	ABB	✓	—	4
BA Language Studies	ABB	*	—	F
BA Language Studies with Latin American Studies	ABB	*	—	F
BA International Relations and Language Studies	ABB	*	—	F
BA Language Studies and Teaching English as a Foreign Language	ABB	*	—	F
Integrated Master in Modern Languages: Modern Languages (Translation)	AAB	✓	—	Y

* If Portuguese is taken as the major language, A-level pass (or equivalent) in Italian, French, Spanish or Portuguese or first language level fluency in Italian, French, Romanian or Spanish is required.

Nursing: adult or mental health

Course name	A-level entry	Specific A-levels	Specific GCSEs	Available course options
BSc Nursing (Adult)**	BBC	—	✓	Y
BSc Nursing (Mental Health)**	BBC	—	✓	Y

Occupational therapy

Course name	A-level entry	Specific A-levels	Specific GCSEs	Available course options
BSc Occupational Therapy**	ABB	—	✓	—

** Compulsory interview required

Oral health science

Course name	A-level entry	Specific A-levels	Specific GCSEs	Available course options
FdSC Oral Health Science**	CC	✓	✓	—
BSc Oral Health Science	*	*	*	—

* See information online

** Compulsory interview required

Philosophy

Course name	A-level entry	Specific A-levels	Specific GCSEs	Available course options
BA Philosophy	ABB	—	—	F Y P
BA Philosophy and History	ABB	—	—	F Y P
BA Philosophy and Law	ABB	—	—	F Y P
BA Philosophy and Literature	ABB	—	—	F Y P
BA Philosophy and Politics	ABB	—	—	F Y P
BA Philosophy and Sociology	ABB	—	—	F Y P
BA Philosophy with Human Rights	ABB	—	—	F Y P
BA Philosophy, Religion and Ethics	ABB	—	—	F Y P
BA Philosophy with Business Management	ABB	—	—	F Y P
BA Philosophy and Art History	ABB	—	—	F Y P
Integrated Master in Philosophy: Philosophy	AAB	—	—	Y P

Physiotherapy

Course name	A-level entry	Specific A-levels	Specific GCSEs	Available course options
BSc Physiotherapy*	ABB	✓	✓	—

* Compulsory interview required



Find out more

Key (Available course options)

F	Y	P
Foundation year option	Year abroad option	Placement year option

See specific subject requirements online.

Politics and international relations

Course name	A-level entry	Specific A-levels	Specific GCSEs	Available course options
BA Politics	ABB	—	—	F Y P
BA Politics with Human Rights	ABB	—	—	F Y P
BA International Development	ABB	—	—	F Y P
BA International Relations	ABB	—	—	F Y P
BA Politics and International Relations	ABB	—	—	Y P
BSc Politics and International Relations	ABB	—	—	Y P
BA Politics with Business	ABB	—	—	Y P
BSc Politics with Business	ABB	—	—	Y P
BA Global Politics	ABB	—	—	Y P
BA Politics with Criminology	ABB	—	—	Y P
BA International Relations and Modern Languages	ABB	*	—	F Y
BSc Politics with Data Science	ABB	—	✓	Y P
BSc Economics and Politics	ABB	—	✓	F Y P
BA Philosophy, Politics and Economics	ABB	—	—	F Y P
Integrated Master in Politics: International Relations	AAB	—	—	Y P
Integrated Master in Politics: Politics and International Relations	AAB	—	—	Y P

* If Portuguese is taken as the major language, A-level pass (or equivalent) in Italian, French, Spanish or Portuguese or first language level fluency in Italian, French, Romanian or Spanish is required.

Psychology

Course name	A-level entry	Specific A-levels	Specific GCSEs	Available course options
BA Psychology	ABB	—	✓	F Y P
BSc Psychology	ABB	—	✓	F Y P
BSc Psychology with Cognitive Neuroscience	ABB	—	✓	F Y P
BSc Psychology with Economics	ABB	—	✓	F Y P
Integrated Master in Science: Psychology with Advanced Research Methods	AAB	—	✓	Y P
Integrated Master in Science: Psychology with Cognitive Neuroscience	AAB	—	✓	Y P

Psychosocial and psychoanalytic studies

Course name	A-level entry	Specific A-levels	Specific GCSEs	Available course options
BA Psychodynamic Practice	BBC	—	—	F Y —
BA Psychosocial and Psychoanalytic Studies	BBC	—	—	F Y P
FdA Therapeutic Communication and Therapeutic Organisations	*	*	*	—
BA Therapeutic Communication and Therapeutic Organisations	*	*	*	—

* See information online

Robotics

Course name	A-level entry	Specific A-levels	Specific GCSEs	Available course options
BEng Robotic Engineering	ABB	✓	✓	F Y P
BEng Mechatronic Systems	ABB	✓	✓	F Y P
BSc Artificial Intelligence	ABB	—	✓	F Y P

Sociology

Course name	A-level entry	Specific A-levels	Specific GCSEs	Available course options
BA Sociology	ABB	—	—	F Y P
BA Sociology and Criminology	ABB	—	—	F Y P
BA Sociology and Politics	ABB	—	—	Y P
BA Sociology with Human Rights	ABB	—	—	Y P
BA Media and Digital Culture	ABB	—	—	F Y P
BA Sociology with Social Psychology	ABB	—	—	Y P
BA Social Anthropology	ABB	—	—	Y P
BSc Sociology (Applied Quantitative Research)	ABB	—	—	Y P
BA Social Anthropology with Human Rights	ABB	—	—	Y P
BA Sociology and Health	ABB	—	—	Y P
BA Social Sciences	ABB	—	—	F Y P
BSc Sociology with Data Science	ABB	—	✓	F Y P
Integrated Master in Sociology: Sociology	AAB	—	—	Y P

Key (Available course options)

F	Y	P
Foundation year option	Year abroad option	Placement year option

See specific subject requirements online.



Find out more

Social work

Course name	A-level entry	Specific A-levels	Specific GCSEs	Available course options
BA Social Work*	BBB	—	✓	—

* Compulsory interview required

Speech and language therapy

Course name	A-level entry	Specific A-levels	Specific GCSEs	Available course options
BSc Speech and Language Therapy*	ABB	—	✓	Y P

* Compulsory interview required

Sport and exercise

Course name	A-level entry	Specific A-levels	Specific GCSEs	Available course options
BSc Sports and Exercise Science	ABB	✓	✓	F Y P
BSc Sports Performance and Coaching	ABB	✓	✓	F Y P
BSc Sport and Exercise Psychology*	ABB	✓	✓	F Y P
Integrated Master in Science: Sports and Exercise Science	AAB	✓	✓	Y P

* Subject to approval

Sports therapy

Course name	A-level entry	Specific A-levels	Specific GCSEs	Available course options
BSc Sport Therapy	ABB	✓	✓	Y P

IMPATIENT **TO TAKE THE NEXT** **STEP?**

You've made it this far. Now here's an opportunity for you to reach out to us. If you have any questions, or would like to get in touch, we'd love to hear from you. If you're one for details, keep reading to find out more about how we work and delve into the 'important stuff'. From visas, to fees, funding and 'what if', you can rest assured that we've thought of it all. We've got your back.

Get in touch with
any queries
(we love a chat!)





OUR PARTNERS

A close-up photograph of a young woman with long dark hair, wearing a black graduation cap and gown with a red stole. She is smiling broadly, showing her teeth, and wearing round, thin-rimmed glasses. She is holding a smartphone in her left hand. The background is a blurred outdoor setting with other graduates and a white tent.

We are committed to making education available through a range of provisions, working closely with partners to develop and maintain learning opportunities.

University of Essex Online

University of Essex Online degree courses give you the opportunity to study for your degree via distance learning, allowing you to gain a qualification from a respected university whilst fitting your studies around work and personal commitments. We have regular intakes throughout the year, and our entry requirements recognise work experience as well as previous academic achievements. Contact us or visit our website for more information.

+44 (0)800 0527 526
enquiries@online.essex.ac.uk
online.essex.ac.uk



University of Essex

Online

University of Essex International College

The University of Essex International College, based at the University's Colchester Campus, is operated by Kaplan International Pathways, a partner institution of the University of Essex.

The College provides pathway courses and pre-sessional English language courses that prepare international students for progression to a university degree course.

Successful completion of a Foundation Certificate (available to international students in the subject areas of Humanities, Social Sciences and Science and Health) would enable progression to the first year of a relevant degree.

An International Year One course (available to international and EU students, offered in Business, Computer Science, Economics, Law, Life Sciences, International Relations, Politics and Psychology) would enable progression to the second year of a relevant degree at the university.

Students who successfully complete their course at the University will graduate with a degree from the University of Essex.

kaplanpathways.com/colleges/university-essex-international-college/



University of Essex

International College

FEES AND FUNDING



Find out more
about funding



Your tuition fees are used to provide you with a transformational education. They help us to create the stimulating and cutting-edge environment that supports the world-class research and education we offer at Essex.

Tuition fees

UK Students

- Our fees for the academic year 2024-25 for UK and Channel Islands students will be £9,250.
- Fees may increase for each academic year of study. For full-time undergraduate students with a home fee status any fee increases during your programme of study will be limited to the annual increase in the RPI-X index.

International and EU students

- Our full time international and EU fees for the academic year 2024-25 are £18,585–£27,500. For a full list of all international tuition fees please check our website.
- You may be able to get a Tuition Fee Loan and help with living costs if you're from an EU country, Iceland, Liechtenstein, Norway or Switzerland. Use the student finance calculator to see what finance you can get.
[gov.uk/student-finance](https://www.gov.uk/student-finance)

**[gov.uk/
student-finance-calculator](https://www.gov.uk/student-finance-calculator)**

- For students commencing their studies in the 2024-25 academic year, your fees will increase for each year of study. This annual increase will be either 5% or the annual increase in the RPI-X index, whichever is higher. If you would like advice on whether you'd be considered as an international student in relation to your tuition fees please contact our Undergraduate Admissions office.
admit@essex.ac.uk
- The UK Council for International Student Affairs (UKCISA) can also give you free, independent advice and information on fee statuses.
[ukcisa.org.uk](https://www.ukcisa.org.uk)
- If you require a student visa to study in the UK, as part of the visa application process you may be asked to produce evidence of your ability to pay tuition fees and to cover living expenses during your course. Find out more about the current Home Office requirements on our website.
[essex.ac.uk/immigration](https://www.essex.ac.uk/immigration)

Student Loans

Access to loans for UK students

- The UK Government provides UK students with a tuition fee loan (subject to eligibility criteria), meaning you will not have to pay your tuition fees upfront or during your course.
- UK students can also take out a maintenance loan to help cover living expenses for your time at university.
[gov.uk/student-finance-calculator](https://www.gov.uk/student-finance-calculator)
- Loan repayments only begin when you earn over a certain amount, and will stop if your income drops below that figure.
- Some students are eligible for scholarships and bursaries. This includes support for care leavers, those from lower income households, and students with refugee status. Find out more about funding opportunities on our website.
[essex.ac.uk/scholarships](https://www.essex.ac.uk/scholarships)

- If you've previously studied at a higher education institution this may affect the amount of financial support available to you. Please contact our Student Funding team with any queries about this or anything else funding related.
funding@essex.ac.uk
- If you're interested in earning some extra money during your studies there are plenty of part-time work opportunities at Essex.

Healthcare grants

From September 2023: students studying the nursing and allied health subjects will receive a non-repayable and non-means tested (universal) grant of at least £5,000 a year, in addition to existing mainstream student support. Funding will be offered to continuing students as well as new course.



HOW TO APPLY



Find out more
about undergraduate
applications



Here comes the important part. For further information on any of the topics listed, visit our website. If you have any other questions, please get in touch with our Undergraduate Admissions Team.

The application process

How do I apply?

Applications for the majority of our courses can be made via either **UCAS.com** or our Direct Admissions form on our website. **essex.ac.uk/Direct**

If you are applying to other institutions or already have a UCAS application, you will not be able to use our Direct Admissions form.

There may be additional elements to the application process for courses at East 15 Acting School, please visit the East 15 applying web pages for further details:

east15.ac.uk/undergraduate/applying-to-east-15

When should I apply?

If you are applying for 2024 entry, you can do so from September 2023 onwards. Applications for the majority of our courses will remain open until 30 June 2024. A small number of our courses may close on or after the UCAS deadline on 31 January 2024. More information about application deadlines is available on the UCAS website.

ucas.com/undergraduate/applying-university/ucas-undergraduate-when-apply

What are the next steps?

When we receive your application, it will be considered by our Admissions team. We will take into account your whole application – including your qualifications, personal statement and reference.

If you applied through UCAS, your UCAS Hub will officially inform you when a decision has been made on your application. Once you've received a decision from all your choices, UCAS will ask you to accept one offer as your firm choice and one offer as your insurance choice via UCAS Hub.

If you applied via our Direct Admissions form we will be in touch with you via email. If we make you an offer, we will let you know when your offer letter is available on your myEssex portal, and you will need to follow the instructions provided in your offer letter to accept your offer via your myEssex applicant portal.

Interviews

Some of our courses require a compulsory interview before an offer can be made. If you have applied to one of our degrees which requires an interview, and you are successful in being invited for interview, we will be in touch via email. Contact srevents@essex.ac.uk for more information on interviews.

Applicant Days

If you receive an offer from us, you will be invited to attend an Applicant Day. This will offer you the chance to find out more about the University and your course.

[essex.ac.uk/visit-us/
applicant-days](https://essex.ac.uk/visit-us/applicant-days)

Confirming your place

If your offer is conditional and you go on to meet the conditions specified within the communicated deadlines, we'll confirm your place if you have accepted us as your firm or insurance choice. If your results don't quite meet the conditions, we may still be able to confirm your place, or you may be offered an alternative course.

Entry requirements

UK students

Typical entry requirements are described on our website.

[essex.ac.uk/undergraduate/
our-courses](https://essex.ac.uk/undergraduate/our-courses)

Entry requirements for courses which include a foundation year are lower than those listed on the subject pages, for our BA/BSc courses.

Please see our website for entry requirements for our courses with a foundation year option.

The wide range of qualifications that we consider include the following:

- A-levels
- BTEC qualifications
- CTEC qualifications
- International Baccalaureate Diploma and Certificates
- QAA-approved Access to HE Diplomas
- Open University courses
- Professional qualifications
- T-levels

If you have not already completed your qualifications, our typical offer will require you to achieve specific grades in three A-levels (or equivalent). We are also happy to consider your application if you are taking a mixture of A-levels and BTECs, or qualifications other than A-levels. If your results fall short of the offer level by a small margin, your results in other qualifications such as the Extended Project, a Core Maths qualification or an additional AS-level may be taken into account. We want you to stand the best chance of benefiting from an Essex Education. We will also consider your application if you are retaking one or more exams.

Requirements for all applicants

Our general entrance requirements are outlined in our Undergraduate Admissions Policy and the Regulations Relating to Admissions which are available on our Applying webpages.

[essex.ac.uk/undergraduate/
applying-to-essex](https://essex.ac.uk/undergraduate/applying-to-essex)

Some courses also have additional A-level or GCSE subject requirements which you'll find on the relevant course pages.

[essex.ac.uk/undergraduate/our-courses](https://www.essex.ac.uk/undergraduate/our-courses)

EU and international students

If you're from outside the UK, we can make offers based on EU and international qualifications that are considered equivalent to our standard A-level offer.

[essex.ac.uk/international/applying-to-essex](https://www.essex.ac.uk/international/applying-to-essex)

English language requirements

You are required to have GCSE English at grade C/4 or above (or equivalent). You can demonstrate your level of English language by achieving a specified score in IELTS or another equivalent test that we accept. You don't need to achieve this level before making your application, but it will be one of the conditions of your offer. For current details of our English language requirements, including UK Visas and Immigration minimum component scores, please visit our website.

[essex.ac.uk/undergraduate/applying-to-essex](https://www.essex.ac.uk/undergraduate/applying-to-essex)

Pre-sessional and English language courses

We offer pre-sessional English language courses at the University of Essex International College (in partnership with Kaplan International Pathways) which can be taken before your degree

if you are an EU or international student and do not meet our English language entry requirements. Upon successful completion of the pre-sessional you won't need to retake an additional English language qualification, and if you've met all other offer conditions you will be able to proceed on to your degree.

[essex.ac.uk/international/pre-sessional](https://www.essex.ac.uk/international/pre-sessional)

Languages

First-language speakers of a modern language will not be able to study that language as part of a modern language degree. To study Portuguese as a major language, applicants must have either an A-level (or equivalent) in Italian, Spanish or Portuguese, or have a first-language fluency in Italian, Romanian or Spanish.

Other useful information

Immigration and applying for a visa

If you require a visa to study in the UK, you'll need to apply under the student route of the UK Government's Points Based Immigration System (PBIS). EU students will need to apply for entry clearance under the UK's Student Immigration Rules, unless you already have settlement. For up-to-date information check our website.

[essex.ac.uk/international/immigration-and-visas](https://www.essex.ac.uk/international/immigration-and-visas)

Pathways courses

Many courses are available to UK and EU applicants with a foundation year, [see page 56](#). For information on pathway courses for international applicants at the University of Essex International College, please [see page 80](#).

Deferred entry

If you wish to take a gap year, you can apply for deferred entry for the majority of our courses. You can apply in the normal way but you should indicate your year of entry on your UCAS application or Direct Admissions form. Applications for deferred entry will be considered on the same basis as those for entry in the year which you apply.

DBS and occupational health checks

Some courses require you to undergo a Disclosure and Barring Service check (DBS), when working with children and/or vulnerable adults, and an occupational health check. If this is a requirement of a course, it will be stated on our website course pages.

[essex.ac.uk/undergraduate/our-courses](https://www.essex.ac.uk/undergraduate/our-courses)

Disability and health

When you apply you can declare whether you have a disability or health issues so we can provide

support. Declaring a disability or health issue will not form part of our decision making and we are dedicated to offering equal opportunities to all.

We have a team of disability and wellbeing advisors, dyslexia tutors, and other specialist staff.

[essex.ac.uk/student/access-and-disability](https://www.essex.ac.uk/student/access-and-disability)

Admissions Policy

Our Undergraduate Admissions Policy, is available on our website.

[essex.ac.uk/-/media/documents/admissions/undergraduate-admissions-policy.pdf](https://www.essex.ac.uk/-/media/documents/admissions/undergraduate-admissions-policy.pdf)

More Information

For any more information please visit our website.

[essex.ac.uk/undergraduate/applying-to-essex](https://www.essex.ac.uk/undergraduate/applying-to-essex)

The information included here is correct as of January 2023.

IMPORTANT INFORMATION

About this prospectus

When we might make changes to advertised courses and other information

This prospectus tries to answer your questions about life and academic provision on offer at the University of Essex. The University makes every effort to ensure the prospectus is accurate at the time it is printed. In exceptional circumstances, it can be necessary to make changes, for example to courses, facilities or fees due to legitimate staffing, financial, regulatory or academic reasons. Examples of such reasons might include a change of law or regulatory requirements, industrial action, lack of demand, departure of key personnel, change in government policy, or withdrawal or reduction of funding. Changes to courses may for example consist of variations to the content and method of delivery of programmes, courses and other services, to discontinue programmes, courses and other services and to merge or combine programmes or courses. If a course change or closure is proposed in such circumstances the University will take all reasonable steps to minimise disruption to students. This will include informing students of the changes in advance, offering alternative options where suitable, and giving them appropriate opportunity to comment on the proposals.

A course would only be closed in exceptional circumstances. If it is

ever necessary to close a course the University's preferred approach would be to continue to teach current students on that course until they have completed their studies. If in exceptional circumstances that is not possible, the University will explore other options with the affected students for example by considering whether those students can be offered places on alternative courses, or whether their studies can be completed at another institution. The University would inform and engage with you if your course was to be discontinued, and would provide you with options, where appropriate, in line with our Compensation and Refund Policy.

For more information please refer to our Student Protection Plan: essex.ac.uk/-/media/documents/about/governance/ofs/student-protection-plan.pdf

No liability for matters outside our control

The University cannot be held responsible for failure/delay in performing obligations caused by things outside our control. This includes but is not limited to: strikes, other industrial action, staff illness, severe weather, fire, civil commotion, riot, invasion, terrorist attack or threat of terrorist attack, war (whether declared or not), natural disaster, restrictions imposed by government or public authorities, epidemic or pandemic disease, or failure of public

utilities or transport systems. In the above context “the University” also includes the University’s officers, employees and agents, and those provisions may be relied on by those officers, employees and agents.

Admissions policy

Applicants are considered in line with the University’s Undergraduate Admissions Policy and the regulations relating to admissions (listed under Academic Regulations), which can be found online at:

[essex.ac.uk/-/media/documents/admissions/undergraduate-admissions-policy.pdf](https://www.essex.ac.uk/-/media/documents/admissions/undergraduate-admissions-policy.pdf)

[essex.ac.uk/-/media/documents/about/governance/academic-regulations.pdf](https://www.essex.ac.uk/-/media/documents/about/governance/academic-regulations.pdf)

The student contract

If your application to the University of Essex is successful, by accepting the offer you will be entering into a legal contract with us, subject to fulfilling any conditions included in your offer. Your rights and obligations to us and our rights and obligations to you will be detailed in the information that we provide once the offer has been made. You should read this information carefully. Applicants and registered students must comply with university regulations, policies and procedures as part of their contract.

University regulations

The University regulations are available at:

[essex.ac.uk/about/governance/regulations](https://www.essex.ac.uk/about/governance/regulations)

The procedures, rules and regulations of the University, governing how it operates, are set out in the Charter, Statutes and Ordinances and in the University policies, available at:

[essex.ac.uk/about/governance/charter-statutes-and-ordinances](https://www.essex.ac.uk/about/governance/charter-statutes-and-ordinances)

[essex.ac.uk/about/governance/policies](https://www.essex.ac.uk/about/governance/policies)

Complaints procedure

The University is committed to equality of opportunity for all applicants, and the University’s admissions policies, procedures and processes are designed to ensure that all applicants are considered fairly, consistently and in accordance with professional standards. The Undergraduate Admissions team strives to provide a high quality experience for all applicants throughout the admissions cycle. In the event that an applicant is dissatisfied with any aspect of the University’s admissions process, procedure or policy and wants to submit a formal complaint, they can do so via the Complaints Policy for Applicants. This policy can be found in full on our Undergraduate Applying webpages:

[essex.ac.uk/-/media/documents/admissions/complaints-policy-for-applicants.pdf](https://www.essex.ac.uk/-/media/documents/admissions/complaints-policy-for-applicants.pdf)

Policy Statement on Equality and Diversity

The University of Essex fosters good relations between people who share a relevant protected characteristic and those who do not, celebrates diversity, challenges inequality and is committed to nurturing an inclusive and diverse community that is open to all who have the potential to benefit from membership of it, and which ensures equality of opportunity for all its members. We expect all our campus communities, employees, workers, contractors, students, invitees and visitors to be treated, and to treat others, with dignity and respect. We have a zero-tolerance approach to discrimination, harassment and bullying.

Zero tolerance means that (i) we will take action and (ii) the action will be proportionate to the circumstances of the case. We are committed to meeting our obligations under the Equality Act 2010, which requires the University show no discrimination as required by law on account of age, disability, gender reassignment, marriage and civil partnership, pregnancy and maternity, race, religion or belief, sex, and sexual orientation. The University will always act lawfully and this may include taking action to support people with particular protected characteristics, including disability and sex. In addition to its obligations under the EA, the University shall adopt policies, practices, and procedures that define expected standards of behaviour and specify any additional characteristics, beyond those

required by law, to which protection is provided, for example, in relation to political belief, social background and refugee status. The University's policies, practices and procedures specifically extend to all gender identities including trans, non-binary and gender non-conforming people.

Tuition fee increases during your studies

Fees for UK and Channel Islands students commencing their studies in 2023 were set at £9,250. In previous years, the tuition fee has increased for each academic year of study. Increases were limited to the annual increase in the RPI-X index. Fees for full-time undergraduate students with a Home fee status remain subject to UK Government approval. For full-time undergraduate students with an international fee status, this annual increase will be 5% or the annual increase in the RPI-X index, whichever is the higher.

essex.ac.uk/undergraduate/fees-and-funding

Alternative formats

This prospectus is available in large print, audio and Braille formats. Please contact our Enquiry Management Team for further information.

admit@essex.ac.uk

Photography

Every effort has been made to obtain permission to reproduce the images contained herein. Please contact us with any image-related queries.

prospectus@essex.ac.uk

CONTACT US



We know you'll probably still have questions for us and there's loads of ways to get in touch.

Live chat

If you want to ask a quick question live chat is the place. Our team are available to speak to from 9.00am – 9.00pm (GMT/BST). [essex.ac.uk/about/contact](https://www.essex.ac.uk/about/contact)

Email

If you have questions about your course, accommodation, finance, welfare, the application process or anything else get in touch with our Enquiry Management Team. admit@essex.ac.uk

Chat with our students

There are some questions only our students can answer, so if you want to talk to a current Essex student to find out more about life and studies with us, this is your chance. [essex.ac.uk/life/chat](https://www.essex.ac.uk/life/chat)

Blogs and podcasts

We have a wide range of blogs and podcasts for you to engage with and enjoy at a time to suit you. Visit our website to check out our blogs and search for University of Essex podcasts on your preferred platform. [essex.ac.uk/blog](https://www.essex.ac.uk/blog)

Social media

Don't forget to follow us on all the main social media channels to keep up-to-date with all the latest news at Essex. Feel free to private message us on social media channels too and we'll get back to you.

 [@uniessex](https://www.instagram.com/uniessex)

 [@uniofessex](https://www.tiktok.com/@uniofessex)

 [@uniofessex](https://www.facebook.com/uniofessex)

 [@Uni_of_Essex](https://twitter.com/Uni_of_Essex)

 [@uniessex1](https://www.youtube.com/uniessex1)

 [@uniofessex](https://vimeo.com/uniofessex)

 [@school/university-of-essex](https://www.linkedin.com/company/school/university-of-essex)

WE ARE ESSEX. WE'RE ON THE SIDE OF **PEOPLE WITH GUTS** – REBELS WITH A CAUSE. WE'RE ABOUT PEOPLE WHO **LOVE TO LEARN HOW, BUT WANT TO CHALLENGE WHY.** BUT WHY DO WE HAVE TO STOP HERE? WHY CAN'T WE TAKE IT FURTHER, TO THE BIT WHERE IT REALLY GETS INTERESTING? WE'RE ABOUT THE PEOPLE WHO HUDDLE OUTSIDE A CLASS LONG AFTER IT'S FINISHED BECAUSE THERE'S MUCH **MORE TO BE SAID,** MORE ARGUMENTS TO BE HAD. WE'RE ABOUT PEOPLE WHO ARE BOLD ENOUGH TO **CHALLENGE INEQUALITY** AND THE STATUS QUO. PEOPLE WHO DON'T EXPECT THE WORLD TO CHANGE SIMPLY BECAUSE THEY POSTED ON SOCIAL MEDIA OR NODDED WHEN SOMEONE ELSE SPOKE. AT ESSEX YOU'RE NOT JUST A STUDENT, **YOU'RE A MEMBER,** SOMEONE WITH GENUINE LICENCE TO SHAPE WHAT GOES ON AROUND YOU. TO US IT DOESN'T MATTER WHERE YOU'VE COME FROM. WE'RE INTERESTED IN HOW YOU WANT TO GROW AND **WHAT YOU WANT TO CHANGE.** WE'RE AFTER PEOPLE WHO WILL HELP US PUSH THE FRONTIERS OF KNOWLEDGE. **CHALLENGING CONVENTION** IS IN OUR DNA. ALL OF WHICH LEAVES YOU WITH A DECISION: ARE YOU GOING TO SIT AND WATCH THE WORLD GO BY? OR DO YOU HAVE THE **COURAGE AND ENERGY** TO SHAPE IT? WE'LL HELP YOU EXPLORE, QUESTION AND CREATE **POWERFUL IDEAS.** WE'LL INTRODUCE YOU TO PEOPLE FROM EVERY CORNER OF THE PLANET, A **GENUINELY GLOBAL COMMUNITY** THAT LIVES, WORKS AND PLAYS TOGETHER. IF YOU GIVE UP AT THE FIRST HURDLE, ESSEX ISN'T FOR YOU. IF YOU WANT TO BE SPOON-FED A DEGREE, ESSEX ISN'T FOR YOU. IF YOU ARE BRAVE ENOUGH TO HAVE IDEAS AND GENEROUS ENOUGH TO SHARE THEM, **WELCOME HOME.**



Visit Us

Colchester Open Days

- Saturday 17 June 2023
- Saturday 16 September 2023
- Saturday 28 October 2023

Southend Open Day

- Saturday 14 October 2023