



University  
of Essex

60

**WHERE**

**CHANGE**

**HAPPENS**

Undergraduate Prospectus 2025

Come to one of our Open Days, where you get to enjoy the true Essex experience.

**BOOK YOUR PLACE**

at one of our Open Days



## 2024 Open Days

---

**Colchester Open Days**

- Saturday 15 June 2024
- Saturday 21 September 2024
- Saturday 26 October 2024

**Southend Open Day**

- Saturday 12 October 2024

## 2025 Open Days

---

**Colchester Open Days**

- Saturday 21 June 2025
- Saturday 20 September 2025
- Saturday 25 October 2025

**Southend Open Day**

- To be confirmed online



# CONTENTS

<b>Why Essex?</b>	<b><u>4</u></b>
<b>Research</b>	<b><u>10</u></b>
<b>Our students</b>	<b><u>14</u></b>
<b>Accommodation</b>	<b><u>42</u></b>
<b>Our Courses</b>	<b><u>60</u></b>
<b>How to apply</b>	<b><u>84</u></b>



# WHY ESSEX?



- We're a **top 30 university** in the Guardian University Guide 2024.
- We're **15th for international outlook** in the Times Higher Education World University Rankings 2024.
- **90% of our undergraduate graduates are in employment or further study** (Graduate Outcomes 2023).
- We're ranked **top 20 globally for two of the United Nations Sustainable Development Goals**; the goal on peace, justice and strong institutions; and the goal on reduced inequalities (Times Higher Education Impact Rankings 2023).





We know that choosing a university is one of the most important choices you'll ever make. Earning a degree with us boosts your career prospects and also helps forge lasting friendships.

## The Essex Spirit

---

When you join Essex, you join for life. You become part of our global family and part of a creative, diverse community that is engaged and kind, where everyone is equal. The Essex community reaches far beyond the boundaries of our campuses. We support each other; we live and learn together; we disagree agreeably; and we develop interests and embrace values that change our lives and careers forever.

### FIND OUT MORE

about why you should choose Essex in 2025



# An inclusive global community

---

There's a reason we're recognised for our international outlook. We know the enormous value of a global outlook; an understanding of different people and cultures and ways of looking at the world. With over 140 nationalities represented in our staff and student body, at Essex you really do find the world in one place.

## FIND OUT MORE

about why you should choose Essex in 2025



# Climate Pledge and sustainability goals

---

The University of Essex declared a Climate and Ecological Emergency in December 2020, ensuring that environmental issues are top of our agenda. In 2021 we committed to reaching net zero carbon emissions by 2035, and since 2012 our emissions have fallen by almost half.





View across the lake towards the Silberrad Centre

## Support with the cost of living

---

As the ongoing cost of living increases make life harder for students, we are doing all we can to support our community.

- We provide scholarships and bursaries for students – find out more at [essex.ac.uk/scholarships](https://essex.ac.uk/scholarships).
- Accommodation costs include energy bills and internet access, so you can budget irrespective of any changes to supplier costs you can rest assured you'll be fine with Essex.
- Working with our Students' Union we're keeping prices low on campus. From a saver menu of hot meals at reduced cost to events run by the SU where you can gather with friends somewhere warm – we have a range of money saving initiatives.
- Our Hardship Fund is designed to help Essex students who are experiencing unexpected, short-term financial difficulty through non-repayable grants.

### LEARN MORE

about our cost of living support





# ESSEX IMPACT

Throughout 2024 and 2025 we are celebrating 60 years of making change happen. 60 years of boldness and bravery from our students and staff, past and present. 60 years of creating change.

For six decades we have nurtured thinkers and doers who have changed our world for the better. We are showcasing this through our 'Sixty Stories' campaign, a weekly series that began in autumn 2023, shedding light on how our students, staff, research and partnerships are creating global impact.

## EXPLORE OUR

sixty stories



Professors Christine Raines and Tracy Lawson (left) with their research team



Professor Ahmed Shaheed speaking at the UN



## Mission to feed the world

---

The race is on to find solutions to grow enough food to feed the world's booming population.

One answer is improving photosynthesis – the complex natural process all plants use to convert sunlight into energy. For nearly 50 years Essex researchers have been a powerhouse for innovation and excellence in photosynthetic research.



**LEARN MORE**  
about our mission  
to feed the world



## Holding the world to account

---

Taking a stand on combatting torture, improving access to health and standing up to intolerance is at the heart of the work of the United Nations. When the UN needs expertise to hold Governments to account through Special Rapporteurs – the experts charged with investigating and reporting on human rights – they turn to Essex.

For more than three decades, UN Special Rapporteurs based at Essex have helped investigate, expose and report

on human rights challenges around the world – changing governmental standards, policies and practices to improve and save people's lives.

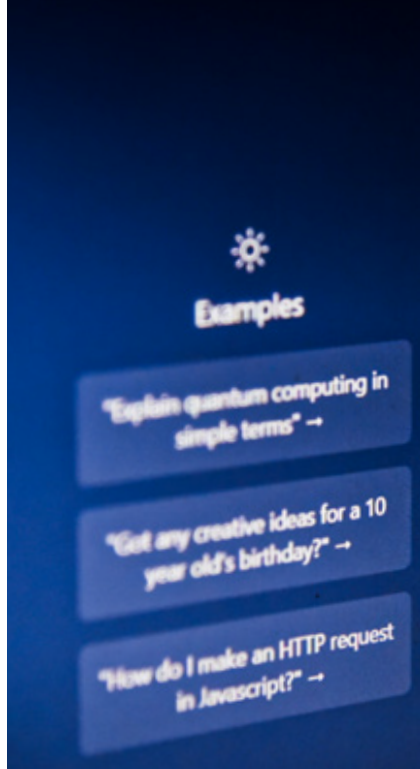
### DISCOVER HOW

Essex is a capital of the Special Rapporteur



# RESEARCH

Essex academics actively research alongside teaching to ensure you are always abreast of the latest developments throughout your studies. Here are some recent research topics.



## Gen Z refuse to be influenced

A research study led by Dr Abhisek Huanr, from Essex Business School, showed that corporate-controlled influencers fail to sway Gen Z shoppers despite firms spending an estimated £4bn in the sector. 18 to 24 year olds will ignore campaigns if they think brands are controlling social media stars fronting promotions.

**FIND  
OUT  
MORE**





# ChatGPT



## Capabilities

Remembers what user said earlier in the conversation

Allows user to provide follow-up corrections

Trained to decline inappropriate requests



## Limitations

May occasionally generate incorrect information

May occasionally produce harmful instructions or biased content

Limited knowledge of world and events after 2021

## AI more creative than humans

Psychology research at Essex has revealed that just 9% of people are more creative than the best artificial intelligence chatbots. A study led by Dr Paul Hanel from the Department of Psychology found that the majority of humans lag behind mechanical muses and struggle to match them on creative writing.

**FIND  
OUT  
MORE**



## The trauma of war

---

Distressed Ukrainians struggling with the day-to-day impact of the war are being given vital access to psychological support and guidance thanks to Professor Renos Papadopoulos from the Department of Psychosocial and Psychoanalytic Studies. He has also been providing support to thousands of educational professionals, including teachers, providing guidance on how to support their pupils and families who were severely distressed by the war.

**FIND  
OUT  
MORE**





## **Pristine deep-sea coral reefs found in the Galápagos**

---

Marine biologists from the University of Essex, led by Dr Michelle Taylor, are part of an expedition which has made a ground-breaking discovery of extensive, ancient deep-sea coral reefs within the Galápagos Marine Reserve (GMR). This exciting discovery is the first of its kind ever to be documented inside the marine protected area (MPA) since the reserve was established in 1998. The first reef observed was found at 400-600m (1,310-1,970 feet) depth at the summit of a previously unmapped seamount in the central part of the archipelago and supports a breathtaking mix of deep marine life.

**FIND  
OUT  
MORE**





# OUR STUDENTS

**GET A GLIMPSE**  
of student life at Essex



**FAY EKINCI**, BA Sociology, second year

“ Two of my professors at home in Norway studied at Essex, they did their undergraduate and postgraduate here. They would tell me all about the student experiences and how welcoming everything is. I've already applied for my MSc! ”

# Eniola Abdul

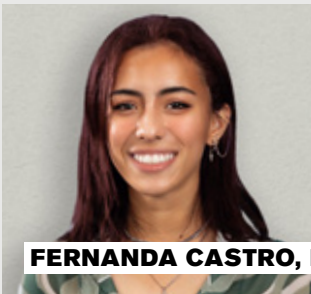
## BA Business Management with a Modern Language, second year

“ I chose Essex because it was one of the few universities that offered my course and has allowed me to combine the two things I love, Business and French. Through the University’s summer abroad programme, I undertook a month-long internship in Paris in June 2023. I was a marketing intern for Irisé Paris, a makeup company next to Notre Dame, and it was the best experience of my life! I did a range of things, such as being the front seller in the boutique and I represented them at networking events, meaning at times I had to speak solely French. It was nerve racking at first, but it was the best way to improve my confidence and everybody was nice enough to help me! I became more independent as I learned more about the business world in Paris, and visited other cities like Versailles, Lille and Marseille. The University were very supportive throughout the whole process, and I received a bursary with the Turing Scheme.

Before I came to university, I knew that whatever I wanted to do in life would include Marketing and French. What I did

not know is that Essex would help me excel in my career in the first year that I was here. For example, I became a Social Media Ambassador for the University. Digital marketing is something that I’m very passionate about and would love to do in the future, so this opportunity has allowed me to explore my creativity skills, think outside of the box, and my editing skills have certainly progressed. Seeing the content I have made for the University do so well is really rewarding. For example, for Clearing 2023 I helped make a TikTok mock clearing call video which got almost 500,000 views. It was amazing to see how many people said it had helped them too.

Essex offers a lot of amazing opportunities, and I would definitely recommend students to take advantage of them as much as possible! In the future, I would love to have my own business within the hair industry, doing my own marketing of course, and my experiences at Essex are for sure helping me to reach my goal. ”



**FERNANDA CASTRO**, BA Criminology, first year

“ I chose to study at the University of Essex because they are pioneers for my subject area. I believe Essex can prepare me best for when I make my transition to the workforce, ready to make a change in the world. ”

# Innovation Centre



**GET A GLIMPSE**  
of student life at Essex



**MUHAMMAD KAREEM**, BSc Accounting, third year

“ Essex has a very diverse campus with the teaching staff as well as students representing many different backgrounds. This has provided me with an amazing opportunity to meet new people, understand new cultures and network with people who will be the leaders of tomorrow. ”



# McCartney Aldous

---

## BSc Sports and Exercise Science, 2022

“ I am the founder of The Student PT. My aim is to help students across the world connect and exercise as a way of looking after mental health.

My career goals developed throughout my time at Essex. As a first-year student I took a personal training level 3 qualification more for back up than anything else! In my second year I came across Essex Startups but didn't think starting a business was for me, at that time I was planning to join the army. It was in my third year while working as a Personal Trainer that I felt like I wanted to explore how I could help fellow students get into exercising as I had found exercise such an effective way to cope with some of the more difficult parts of uni life. So I enrolled on the Startups Summer Bootcamp and with their help writing a business plan, I obtained some funding. After graduating in summer 2022 I continued to work with Essex Startups and even received their One to Watch Award.

Through Startups not only did I manage to gain financial investment, I also enhanced my professional network and have recently brought in a co-founder to manage the technical side of the business. We're now working on building an app for The Student PT, facilitating access to training plans and communication among our members.

There was so much free support at Essex, far more than I realised when I started, so I'd encourage new students at Essex to explore all the resources and support available. It's no joke when you hear that Essex membership is for life, I'm still calling upon the Essex community to help achieve my goals. I never imagined I would be on the path I'm on. If it wasn't for staff and the influence of my Essex journey, I would be a different person.”



“ My highlight of Essex has been learning something I love, working in labs doing experiments and meeting like-minded people, for example through the Women in STEM Society.”

**DEIMANTE RAMONAITE**, BSc Biomedical Science, third year

# CAREERS AND EMPLOYABILITY



Private study pod at the Colchester Campus

We know the importance of preparing you for life after graduation, which is why we do everything we can to help you achieve your goals.

**GET A SNEAK PEEK**  
of an Essex graduation



## Placements and Study Abroad

---

Many of our degrees offer the option of a placement year and/or study abroad options. This gives you the opportunity to gain real-world experience in the world of work and/or abroad. You can check our course pages to see which courses have the option of a placement year or year abroad.

## Employability skills built in

---

Most of our degrees include compulsory career modules each year of study. This means that you'll have time to prepare for your future career, and the opportunity to consider how your academic skills will be useful in the world of work. Many of our courses also offer the option of work-based learning, immersing you in the world of work before you even graduate.

## Paid work on campus

---

The University and the Students' Union employ over 1,000 students on our campuses, all paid at least the Voluntary Living Wage. Build up your work experience and help financially support your studies.

## Chart My Path and The Big Essex Award

---

Whilst at Essex you can use Chart My Path and The Big Essex Award to complete and log extra-curricular activities such as volunteering, to promote skills that will help you gain employment in the future.

## Volunteering

---

From joining the Students' Union VTeam to work on community projects to sport coaching; or spending a summer the other side of the world there are endless opportunities for volunteering.



## Essex For All

---

Essex For All is an expanding initiative designed to offer a range of short courses to our students, at no additional cost. These courses will help develop your existing skills and gain new ones, as well as expand your knowledge on issues that matter to you. Essex For All courses available are:

- **Data For All** – learn in-demand data science and analytical skills.
- **Languages For All** – learn a modern language for up to a year.
- **Democracy and Citizenship For All** – gain local knowledge to help society.
- **Creative Arts and Culture For All** – making art accessible for everyone.
- **Sustainability For All** – put knowledge into practice on environmental issues.

## CareerHub and Essex Startups

---

As an Essex student you'll have access to **CareerHub** – a dedicated portal where you can search for jobs and internships, book on to employability events and workshops, and book careers-related appointments with our advisors. If entrepreneurship is your thing, **Essex Startups** provide free support and guidance to help Essex students launch their own businesses. (Check out McCartney's Startup story on page 16.)

## Essex alumni career paths

---

Recent Essex graduates have gone on to work for companies and organisations including:

- Bank of England
- Coca Cola
- Condé Nast
- Google
- ITV
- Mental health charity, MIND
- Operation Wallacea
- Red Bull Racing Formula One Team
- United Nations





## Q-Step pathways

---

On selected courses you can follow a Q-Step pathway of modules within your existing course. You will graduate with a qualifier award at the end of your degree, signalling to employers your capability in highly sought after quantitative research skills.

## Loyalty discount on postgraduate study

---

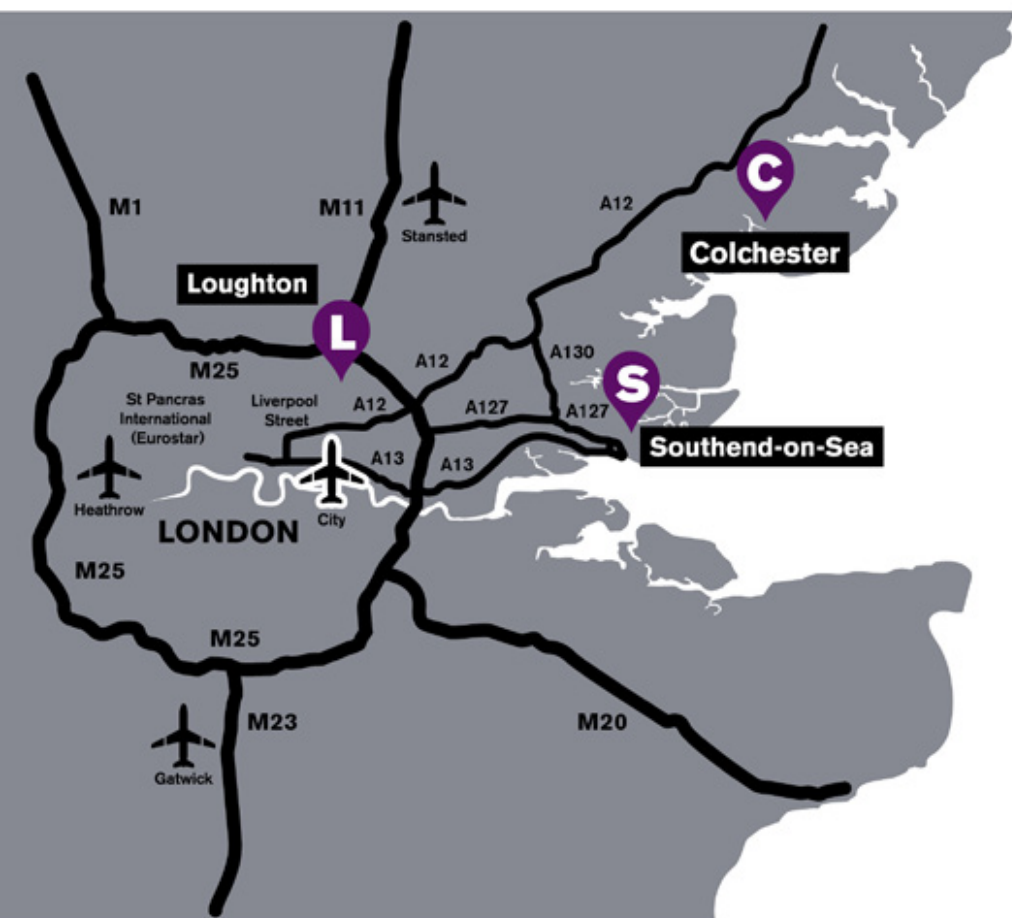
If you're considering postgraduate study the door is always open for further study with us. We offer a loyalty discount of up to 33% off the first year of your postgraduate study for Essex alumni.

### FIND OUT MORE

about careers and employability



# OUR CAMPUSES



The University of Essex is based at three campuses: Colchester, Southend-on-Sea and Loughton. Your course will be based at one campus location.

**FIND OUT MORE**  
about our campuses





## Colchester to:

- Central London: 45 minutes to 1 hour by train, 1 hour and 40 minutes by car.
- Stansted Airport: 1 hour and 15 minutes by bus, 50 minutes by car.
- Southend Airport: 1 hour and 15 minutes by train, 1 hour by car.
- Gatwick Airport: 1 hour and 50 minutes by train, 1 hour and 40 minutes by car.
- Heathrow Airport: 2 hours and 10 minutes by train, 1 hour and 55 minutes by car.

## Southend to:

- Central London: 45 minutes to 1 hour by train, 1 hour and 20 minutes by car.
- Southend Airport: 15 minutes by bus, 10 minutes by car.
- Stansted Airport: 1 hour and 30 minutes by bus, 1 hour by car.
- Gatwick Airport: 2 hours by train, 1 hour and 10 minutes by car.
- Heathrow Airport: 2 hours by train, 1 hour and 20 minutes by car.

**C** Colchester

**S** Southend-on-Sea

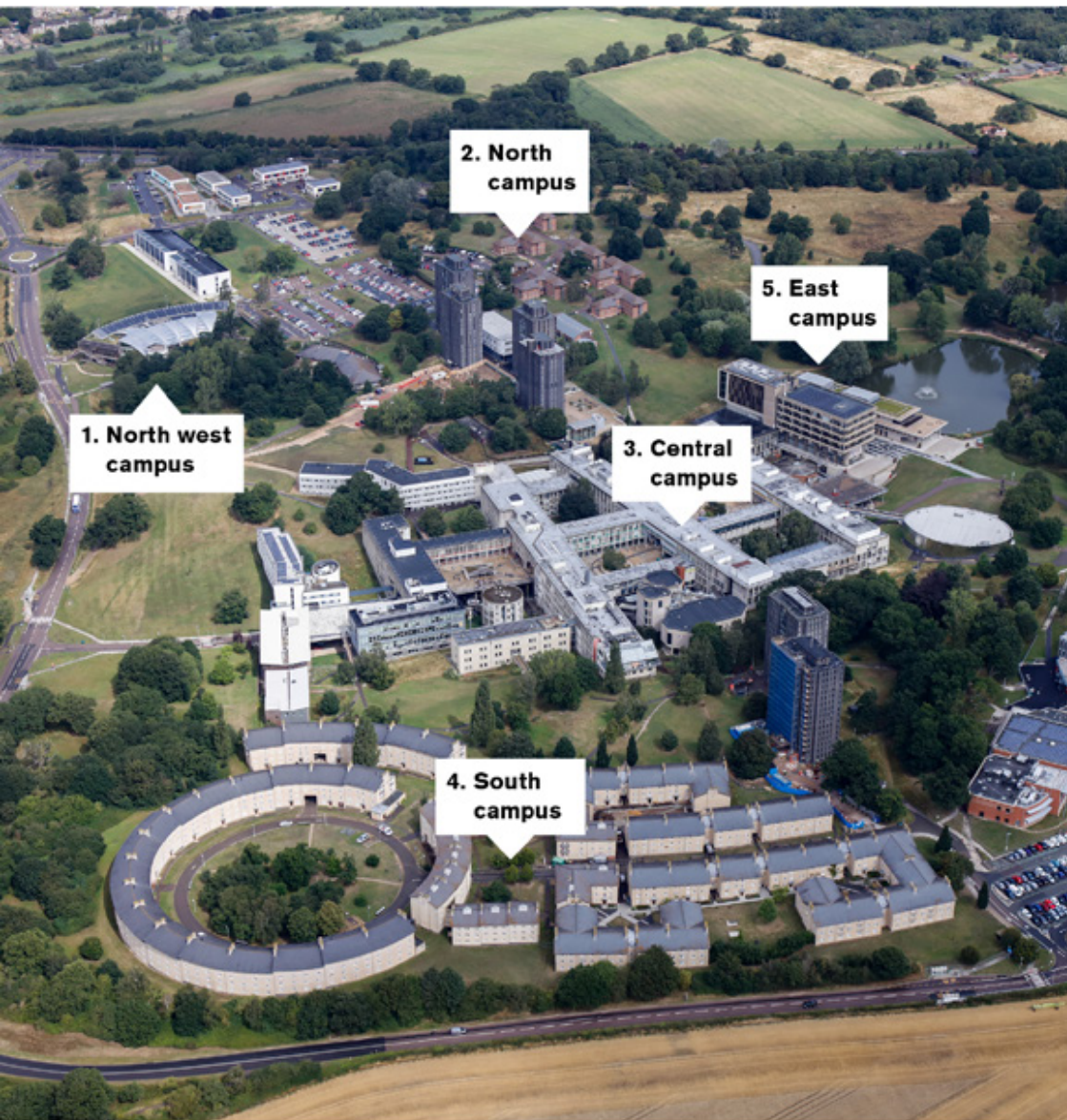
**L** Loughton

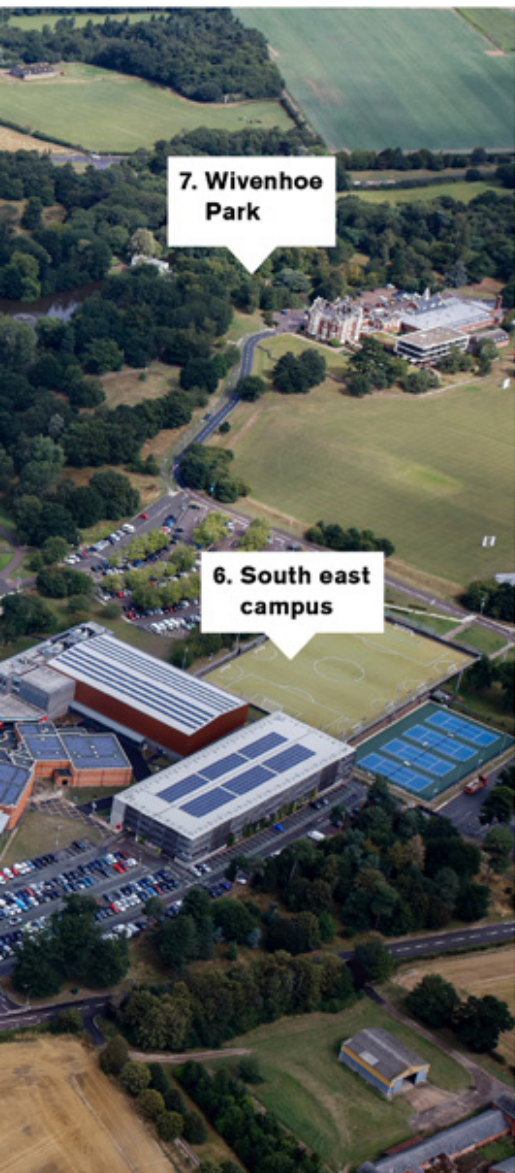
## Loughton to:

- Central London: 42 minutes by train, 45 minutes by car.
- London City Airport: 40 minutes by train, 25 minutes by car.
- Stansted Airport: 1 hour and 28 minutes by train, 30 minutes by car.
- Gatwick Airport: 1 hour and 30 minutes by train, 1 hour and 20 minutes by car.
- Heathrow Airport: 40 minutes by train, 1 hour by car.



# COLCHESTER CAMPUS





**7. Wivenhoe Park**

**6. South east campus**

## 1. North west campus

- Accommodation – The Copse, The Meadows, The Pastures, University Quays
- Essex Business School
- Day Nursery
- Knowledge Gateway and Innovation Centre

## 2. North campus

- Accommodation – North Towers, The Houses, Wolfson Court
- Health Centre
- Teaching Centres

## 3. Central campus

- Lecture Theatre Building
- Academic Departments
- Lecture and seminar rooms
- Students' Union
- Bars, cafés and restaurants
- Shops

## 4. South campus

- Accommodation – South Towers, South Courts
- STEM Centre

## 5. East campus

- Ivor Crewe Lecture Hall
- Silberrad Student Centre
- SU Creative Studios
- Albert Sloman Library
- Lakeside Theatre and Café
- Parkland and lakes

## 6. South east campus

- Essex Sport Arena
- Sports Centre and Gym
- Synthetic turf pitch
- Tennis courts

## 7. Wivenhoe Park

- Wivenhoe House Hotel
- Edge Hotel School
- Essex Collection of Art from Latin America (ESCALA)
- Campus allotment
- Sports pitches and parkland



# LIFE ON COLCHESTER CAMPUS



Green space next to South Towers accommodation

Located within 300 acres of parkland Wivenhoe Park, our Colchester Campus is surrounded by beautiful landscape and with Colchester city centre just down the road it really is the perfect place to study, live and relax.



## Ways to keep busy

The centre of campus is buzzing with life, from a weekly street market to international cultural celebrations; it's a vibrant hub bringing together students and staff from over 140 countries.

You can watch a film at our **on-campus cinema**, Cine10, compete in a pub quiz at one of our **student bars**, enjoy a show at the **Lakeside Theatre**, or dance the night away at Sub Zero, our **on-campus nightclub**.

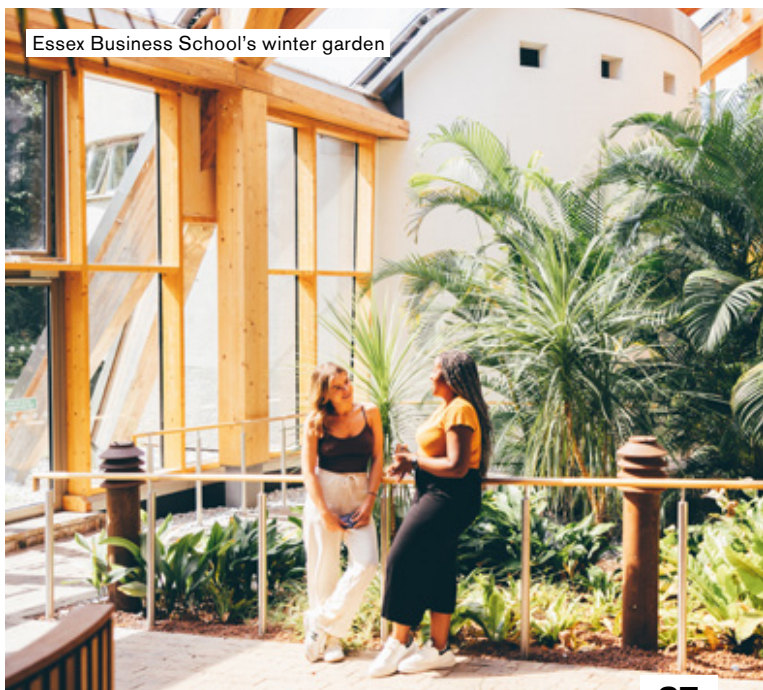
## Places to study

At the centre of the campus is the **The Albert Sloman Library**, open 24/7. Next door is the **Silberrad Student Centre**, home to study pods, group working spaces, IT suites and our **student services hub** – your one-stop-shop for questions. We also have a variety of study spaces across our campuses, so if you want to work with friends or just out of your bedroom, there'll be somewhere you can get your head down to focus on your studies. Computers, scanners and printers are available in our IT labs across campus, as well as free short-term laptop loans.

**SPEND A DAY**  
on our Colchester  
Campus with current  
student, Aimee



Essex Business School's winter garden





## Food and drink

---

Whether you need a coffee and a croissant, want to grab some street food, or indulge in something hearty, we've got food and drink establishments on campus. We also have a weekly food market with local suppliers, and the SU shop has all the essentials (and more) for rustling up dinner for you and your flat mates.

### FIND OUT MORE

about life at our Colchester Campus



## Health and wellbeing

---

You have access to an **NHS health centre** on campus. If you need childcare during your time at Essex we have a day-time **nursery**. We celebrate and welcome a mix of faiths and beliefs from around the world. Our **multi-faith space** is a place to practice or explore faith, either on campus or by connecting you to a local place of worship.

We also offer a full range of **support services** that covers everything from commuting to mental health. See page 58 for more information.

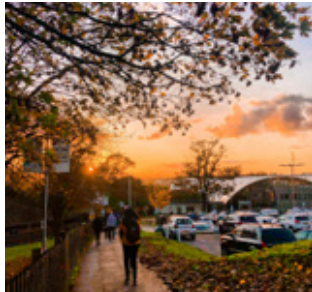






## Subject facilities

- The **STEM Centre** includes a 180-seat wet lab for our School of Life Sciences and a learning space to enable collaboration between students in our Faculty of Science and Health.
- **Essex Business School** is the UK's first zero carbon business school building, featuring a winter garden, café, quiet study spaces and a virtual trading floor.
- Our Healthcare students have access to a **functioning hospital ward** with robot patients which can simulate a range of medical conditions.
- **Essex Law Clinic** offers initial legal advice to the local community. Students from Essex Law School have the chance to work alongside practicing lawyers and advise real clients to gain hands-on experience.
- For use by our Language and Linguistics students, our **interpreting training lab** and **simultaneous interpreting booths** are unique facilities in the East of England.



# BEYOND COLCHESTER CAMPUS

Colchester city centre is a 10-minute bus journey, 15-minute cycle ride, or 40-minute walk from central campus meaning you're within easy reach of everything the city has to offer.

## Arts and history

If the arts are your thing there's Firstsite Art Gallery, The Mercury Theatre and Colchester Arts Centre, known for its intimate music and comedy gigs. We're Britain's first city; Colchester Castle and its surrounding park and museums, are perfect for soaking up the culture and history of the area.

## Shopping

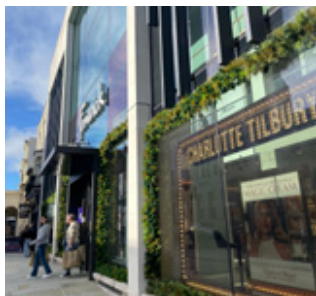
Colchester city centre is home to high street brands, independent boutiques and charity shops. Break up your shopping with a flat white or lunch at one of the many coffee shops and cafés.

## Day trips

Just the other side of the city is Colchester Zoo. If the weather isn't great there's Aqua Springs Spa, escape rooms and the No Name Bar; a one-stop-shop with axe throwing, pool, beer pong, karaoke and more! Something to suit whatever weekend mood you're in.



Colchester Town Hall





**LEARN MORE**  
about the local area



## Nights out

---

Colchester is home to restaurants, pubs and bars a plenty. With a mix of independent eateries and chain restaurants such as Wagamamas, Five Guys and Zizzis, there's something to tickle your tastebuds. If you're looking for craft ales and have a serious commitment to gin then Three Wise Monkeys is your place. Want something more insta-worthy – check out Pavillion. Or you could dance the night away at one of the many bars with live music and DJs, or head to a concert in Castle Park.

## Further afield

---

Colchester Campus is surrounded by beautiful countryside and coastline. Mersea Island, Wivenhoe and Dedham Vale are all between a 10-30 minute journey by car/ bus and are beautiful spots to enjoy a sunny Saturday with a picnic. And if the bright lights are calling, you're just a 45-minute train ride to London Liverpool Street and everything the capital has to offer.





# SOUTHEND CAMPUS



8. Seafront

3. Southend  
Central  
Station

2. The Gateway  
Building

1. The  
Forum

5. High  
Street

4. University  
Square  
Accommodation

6. Southend  
Victoria  
Station





**7. Clifftown Theatre**

## 1. The Forum

- The Learning Hub
- Student Services
- Public and academic library
- Lecture and seminar rooms

## 2. The Gateway Building

- Academic Departments
- Lecture and seminar rooms
- Students' Union lounge

## 3. Southend Central Station

- Connections to Leigh-on-Sea, London and Lakeside Shopping Centre

## 4. University Square Accommodation

- Supermarket
- International shops, common room and study spaces

## 5. High Street

- Cinema
- Cafés and restaurants
- Post Office
- Chain stores and independent shops

## 6. Southend Victoria Station

- Connections to Colchester, London and Southend Airport for flights across Europe

## 7. Clifftown Theatre

- East 15 Acting School
- Prittlewell Square Gardens
- The Railway Hotel music venue

## 8. Seafrost

- Southend Pier
- Adventure Island amusement park
- Beach and promenade

# LIFE AT SOUTHEND CAMPUS

The Forum building

Set on the Thames estuary with fantastic transport links, our Southend Campus is based in the heart of the city, surrounded by places to eat, a vibrant nightlife, independent boutiques, museums, an international airport, and a seven-mile beach front!



- **The Forum** offers a 24 hour learning hub with modern study spaces and access to over 150,000 books, ideal for an all-nighter spent essay writing (not that we'd recommend it of course).
- The **SU Lounge** is great for catching up on reading, settling down with your laptop or just relaxing with a good book.
- Make the most of being in **the city centre** and find yourself a cosy corner in your favourite café to crack on with some work with a cappuccino.
- Set in a converted Gothic church, **Clifftown Theatre** is home to our East 15 students and it's where they showcase their work. Whether you're a keen actor, interested in production, or just enjoy an evening at the theatre, this is the place for you.
- Our **Faith Centre** in **The Gateway Building** is the perfect space to practice and explore your faith.
- Our **Dental Skills lab** is equipped with phantom heads for our Oral Health Science students to practise using equipment such as ultrasonic scalers.
- Nursing students have access to a **mock ward** for practising clinical skills before placements. There is also a multi-skills lab set out like a living room and bedroom to replicate community-nursing settings, such as a care home.
- As a city-centre campus, studying in Southend gives you all the conveniences of urban living as well as university specific facilities, so you can really make the most of your time with us.

**FIND OUT MORE**  
about Southend  
Campus



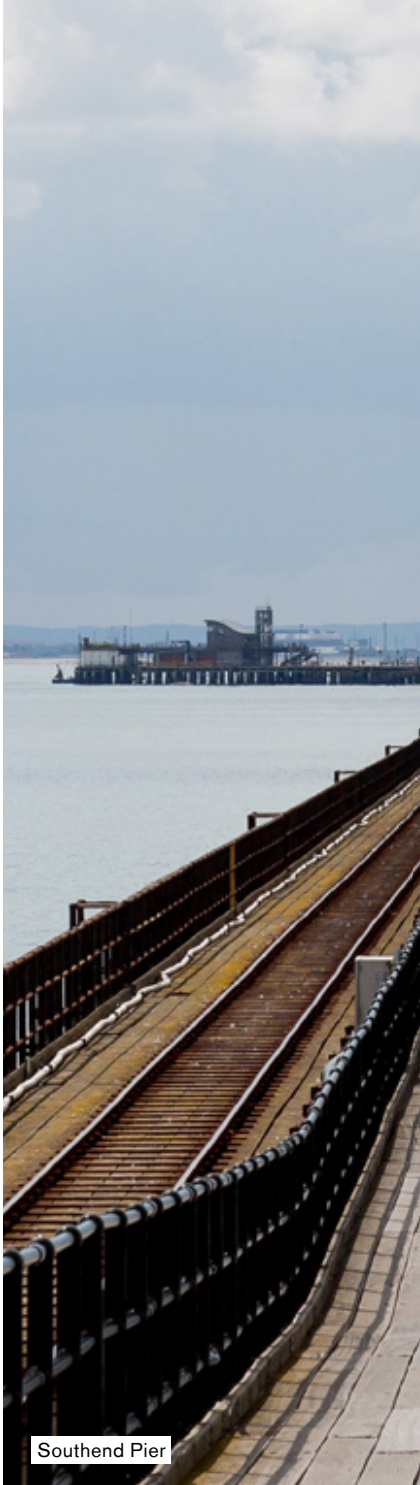
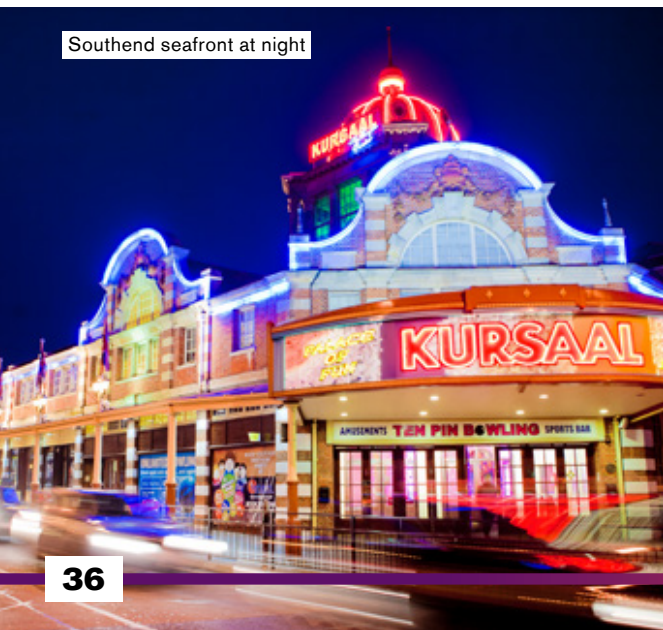
The library within The Forum



# BEYOND SOUTHEND CAMPUS

Southend seafront is a breath of fresh air. Discover a place of beautiful contrast, with bags full of character. Aside from the pier and beach to enjoy, there's also Adventure Island if you fancy a rollercoaster ride, or the aquarium for checking out some marine life.

Southend seafront at night



Southend Pier





**LEARN MORE**  
about the local area



## Outdoors

---

Get some fresh air and explore one of Southend's many parks and nature reserves such as Prittlewell Square Gardens, next to Clifftown Theatre. It's a great alternative to the beach for enjoying the beautiful Essex sunshine.

## History

---

If history is your thing, why not visit one of Southend's four museums and discover its history? Nearby Hadleigh Castle dates back to the thirteenth century. Though much of it has been destroyed over the centuries, the ruins provide a fascinating place to explore. Miles of seafront, ample green space and a rich heritage – and that's all before you step foot on campus!

## Further afield

---

With two train stations to choose from, both with links to London, the capital is just 50 minutes away. Whether it's a trip to the West End, a proper night out, or a shop 'til you drop Saturday, it's all just a train ride away. Plus, did someone say city break? Southend has its own airport with direct flights to Amsterdam, Paris, Alicante and Geneva to name a few.

## Nights out

---

Whether you fancy fish and chips on the beach as the sun goes down, a few quiet drinks at the bar or showing off your best dance moves at a club – Southend has it all. The city will spoil you for choice with its vast offering of bars, clubs, restaurants, and seafront pubs and a great selection of live music, theatre, and comedy shows.

# LIFE AT LOUGHTON CAMPUS



Our Loughton Campus sits on the edge of North London. Just a tube ride away from the West End, but situated in the grounds of a picturesque Georgian house, our East 15 students enjoy the best of both worlds.



## Facilities

---

Dedicated to our East 15 Acting School, the heart of our Loughton Campus is Hatfields, a beautiful Georgian house. Set in five acres of green land, the site boasts 28 rehearsal spaces, a dance studio, radio recording room, a large café and common room space, Mac editing suite, library, screening rooms and the school's own, fully equipped theatre.

Roding House contains the School's Joan Littlewood Studio Theatre, 10 rehearsal rooms, a green room, sound recording studio, video editing suite and a costume department.

## Accommodation

---

Our Loughton students live off campus in the nearby town, giving you the flexibility to choose between a shared house, living with a landlord or letting a whole house.

## Notable alumni

---

As a graduate of East 15 Acting School and the University of Essex you're in great company. Our alumni are creating daring, pioneering, fresh, and world-famous work across stage and screen.

Here's a short list of some former students that you might recognise:

- Patricia Allison – Netflix's 'Sex Education'
- Daniel Ezra – The CW/Netflix's 'All American'
- Meng'er Zhang – Marvel's 'Shang Chi'
- Blake Harrison – C4's 'The Inbetweeners'
- Kiell Smith-Bynoe – BBC's 'Ghosts'
- Diane Morgan – Philomena Cunk, 'After Life', 'Mandy'

### FIND OUT MORE

about Loughton  
Campus



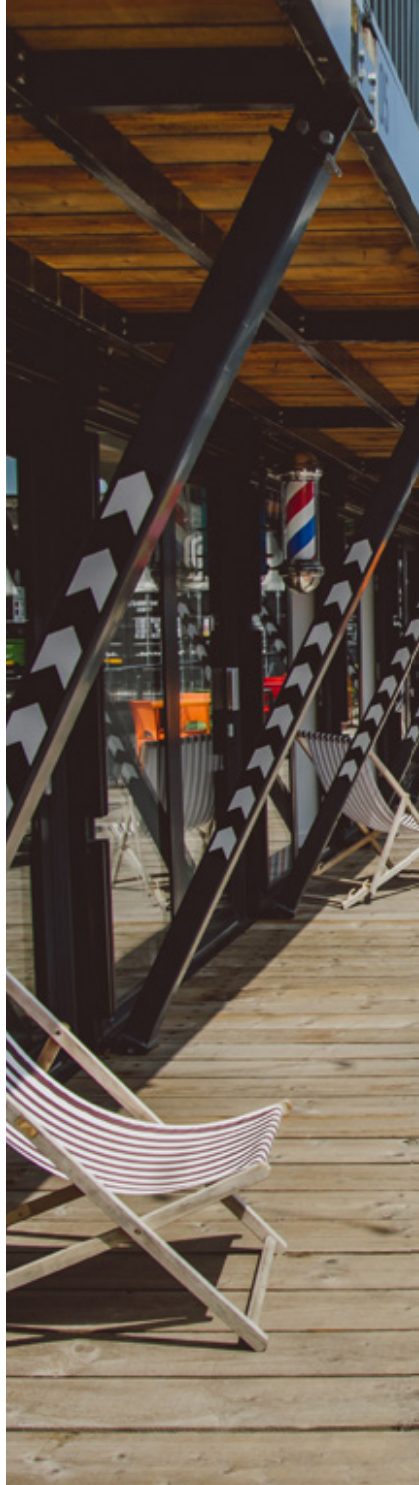
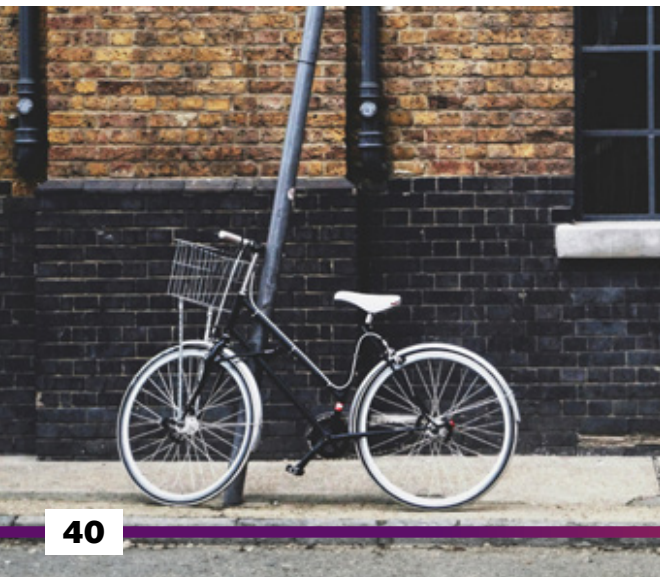


# BEYOND LOUGHTON CAMPUS

There's something for everyone when exploring the nearby delights of Loughton and further a field.

## LEARN MORE

about the local area







## North London location

---

It's not all work and no play in Loughton. The campus is just a five minute walk from the nearest London Underground station, Debden. Take a thirty minute ride into Central London for West End theatres, shopping, and all other mainline stations for any last minute weekend trips. The campus is situated on the edge of Epping Forest, a 6,000 acre ancient woodland, ideal for a study break in the fresh air.

The centre of Loughton is a short stroll away from campus. Treat yourself to some shopping in the independent boutiques, or ditch the pot noodle and head out to one of the many restaurants and pubs.

## Nearby facilities

---

Home to our Stage and Production Management Department, Unit Four is a £1.5 million facility containing a large workshop, paint shop, prop department and teaching spaces. Based on the Hatfield site, the Corbett Theatre is a unique performance and learning space. The theatre is a converted barn, transformed into seating for 130 people, equipped with dressing rooms and full technical facilities. East 15 host many public performances throughout the year here, alongside lectures, rehearsals and technical classes.



# ACCOMMODATION.

# YOUR LIFE. YOUR HOME. YOUR ESSEX.

With guaranteed on-campus accommodation for all first-year students and the option to lock in your accommodation for the duration of your 3-year course. It's your chance to live at the heart of a vibrant campus community with shared values and diverse interests.





**FIND OUT MORE**  
about accommodation  
at Essex



The Copse accommodation  
at our Colchester Campus

It's more than just a room. It's your place to connect and thrive, make friends for life, and embrace the moments that make you. It's more than just a room. It's your place to connect and thrive, make friends for life, and embrace the moments that make you.





## The Towers



### North Towers

**Cost per week: £119.00**

- Location: Colchester Campus
- Shared bathroom facilities
- 2 minute walk to central campus
- 3-14 rooms per flat



**FIND  
OUT  
MORE**



North



South

### South Towers

**Cost per week: £126.56**

- Location: Colchester Campus
- Shared bathroom facilities
- 2 minute walk to central campus
- 5-16 rooms per flat
- Newly refurbished (enhanced)



**FIND  
OUT  
MORE**



## The Houses



**Cost per week: £170.80-£185.50**

- Location: Colchester Campus
- En suite facilities
- 5 minute walk to central campus
- 4-6 students per flat
- Adapted, twin, newly refurbished (enhanced) and premium (bigger bed) rooms available

# Wolfson Court



**Cost per week: £138.04**

- Location: Colchester Campus
- Shared bathroom facilities
- 3 minute walk to central campus
- 7 rooms per flat
- Hand basin in your room



**FIND  
OUT  
MORE**

# South Courts



**FIND  
OUT  
MORE**



**Cost per week: £188.16-£194.74**

- Location: Colchester Campus
- En suite facilities
- 5 minute walk to central campus
- 4-14 rooms per flat
- Adapted, twin, newly refurbished (enhanced) and premium (bigger bed) rooms available
- Home to our athlete's village

## The Meadows



**Cost per week: £187.74-£235.55**

- Location: Colchester Campus
- Shared and en suite bathroom facilities
- 10 minute walk to central campus
- 5-12 rooms per flat
- Premium rooms (bigger bed) and self-contained apartments available



**FIND  
OUT  
MORE**



**FIND  
OUT  
MORE**



## The Cope



**Cost per week: £200.97-£235.69**

- Location: Colchester Campus
- En suite bathroom facilities
- 10 minute walk to central campus
- 4-12 rooms per flat
- Studio apartments and adapted rooms available
- Premium rooms and premium plus rooms available



## University Quays



**Cost per week: £179.34-£256.55**

- Location: Colchester Campus
- En suite bathroom facilities
- 15 minute walk to central campus
- 4-9 rooms per flat
- Premium rooms (bigger bed), double rooms and self-contained apartments available



**FIND  
OUT  
MORE**



**FIND  
OUT  
MORE**



## University Square



**Cost per week: £165.48-£225.75**

- Location: Southend Campus
- En suite bathroom facilities
- 5 minute walk to main university buildings and the city centre
- 11 rooms per flat
- Studio rooms and adapted studios available



**FIND  
OUT  
MORE**



## **The Pastures**



**Cost per week: £164.29-£231.56**

- Location: Colchester Campus
- Shared and en suite bathroom facilities
- 15 minute walk to central campus
- 8-12 students per flat
- Studio rooms available
- All premium rooms (bigger bed) with studio apartments available



# THE DETAILS

## Accommodation costs

---

Your rent includes: Wi-Fi, heating, hot water, contents insurance, electricity and the cleaning of communal areas. On our Colchester Campus you'll also receive an Essex Sport Silver membership included in your rent.

Where price variations are shown, the price varies depending on the specification of the room (en suite, premium etc.) and the number of rooms in the flat. The costs shown are the 2024-25 costs per week. It's likely that our rental charges for 2025-26 will increase.

## Living on campus

---

Rooms are normally let for the full academic year (late September – late June), so if you're away during the winter and spring vacations you don't have to remove things from your room.

We also offer: single gender flats, adapted rooms, self-contained accommodation for single or double occupancy, shared twin en suite rooms and studios.

We cannot guarantee accommodation for first-year students who are accompanied by a partner, but we'll do our best to help. Please contact us as early as possible about this: [\*\*askthehub@essex.ac.uk\*\*](mailto:askthehub@essex.ac.uk)

## Settling in

---

You'll have a Residents' Assistant based in your university accommodation who will meet you soon after you arrive. Their job is to make sure that you have opportunities to get involved in university life and social activities, and provide support outside of office hours.

We also have accommodation community groups including LGBTQ+, meaning you can live exclusively with fellow members of the LGBTQ+ community.

## Living nearby

---

The Students' Union offers a house-finding service, SU Homes, from our Colchester Campus. They provide support for everyone moving off campus including helping you to find your ideal property, and completing property and landlord checks to ensure your safety.





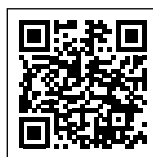
# BEYOND THE CLASSROOM



Square 3 – at the heart of our Colchester Campus

From societies through to student support, sport and study abroad, life at Essex extends far beyond the classroom.

**FIND OUT MORE**  
about life at Essex







# STUDENTS' UNION

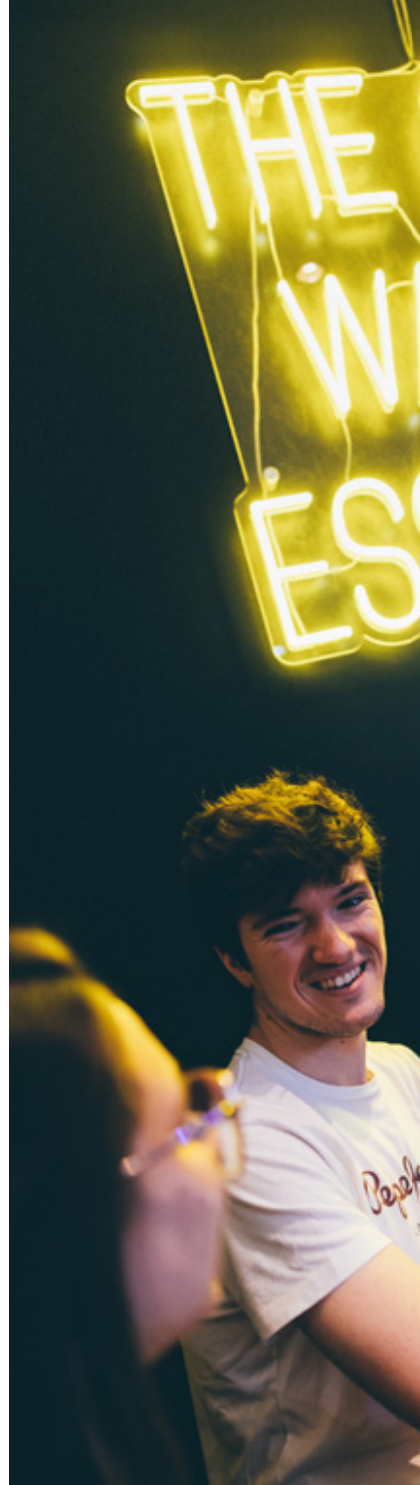
The Students' Union is run for students, by students. All Essex students are members, so you can always be heard and have your say.

## FIND OUT MORE

about our SU



Students celebrating Holi







## **Get involved**

---

Our SU offers membership to over 100 societies, catering to varied interests and tastes. If we really don't have a group for you, we'll help you set up your own.

## **Colchester Campus**

---

At the Colchester Campus the SU runs shops, cafés, bars, restaurants and a nightclub. You're a member by default, giving you genuine licence to shape your university experience around you.

## **Southend Campus**

---

The SU Lounge is fully run and owned by students and is the ideal place to catch up with friends. This is your home-from-home, for studying, grabbing a cappuccino, a bite to eat, or just hanging out between classes.

## **Loughton Campus**

---

Loughton boasts everything from coffee events in the Students' Union Corbett Theatre Café through to membership of 'Just Play', our informal sports clubs.

## **And that's not all...**

---

We make sure you are never bored with activities day and night to keep you occupied. Our cinema shows the latest films, we have quizzes in the bar and open forums for heated debates.

# ESSEX SPORT



Inside the Sport Arena

We are committed to offering sport for everyone. Whatever your level or interest, we'll help you play to your strengths.

**FIND OUT MORE**  
about sport at Essex



## Facilities

Covering 50 acres, our outdoor sports area includes an 18-hole disc-golf course and **all-weather tennis courts**, plus there's plenty of space to have a kick about with friends or enjoy a **run around the lakes**. Also at Colchester, our **Sport Arena**, built to international sporting standards boasts seating for 1,655 spectators and includes **20 courts for basketball, netball, volleyball, badminton and futsal**. We even have a climbing wall located within our sports centre.

As a student at our Southend Campus you're in the centre of Southend-on-Sea with access to a vast range of activities – even kitesurfing and swimming if you can brave the cold! The Students' Union also run **Just Play** – our free SU social sport programme focused on getting you active, making friends and having fun without major commitment.

Our **on-campus gym** in Colchester is our most popular sporting facility, with 160 workout stations and more than 100 fitness classes per week.

## Teams

Our Students' Union is home to the **Essex Blades** – over 40 student sports clubs including cheerleading, basketball, football, lacrosse, MMA, squash and so much more! They compete locally and nationally so be warned, you're highly likely to develop a strong allegiance to the Blades.

## Placements and bursaries

At Essex we will support your personal development, offering **coaching opportunities** in an official or volunteer capacity. We also offer work placements within Essex Sport, and practical sporting experiences with organisations and national governing bodies. Our **Performance Sport programme** offers expert coaching, top-notch facilities, and a supportive community of like-minded athletes. Explore **sport scholarships, including up to 100% fee discounts**, cash bursaries, and valuable support packages.





# STUDY ABROAD

Your chance to explore new places, cultures and languages is here. We offer opportunities to study or work abroad for a year, term or summer.



**FIND OUT MORE**  
about study abroad





You can study, work or volunteer at one of our partner institutions around the world. If you're a visiting study abroad student, come and experience academic life in the UK, the Essex way.

Studying or working abroad gives you the chance to immerse yourself in another culture, develop your independence and boost your confidence, giving you an enormous advantage when you enter the global job market.

Want to travel the world as part of your degree? Most of our courses have study abroad options, where you can complete an additional year, or term, of your course at a partner university. We offer year abroad placement opportunities too! Courses with the option for a study abroad year have a **S** symbol on our course listings.



# SUPPORT SERVICES



Our Student Services Hub is a one-stop-shop for practical advice and confidential guidance on everything from accommodation to how to cope with homesickness.





## Student services

---

The Student Services Hub is the go-to place for help with health, wellbeing, finance and more.

## Access and disability

---

If you have a disability, medical condition or specific learning difficulty, a specialist adviser will be on hand to talk you through alternative exam arrangements, lecture recordings, assistive software, access and more. You'll also have a specific contact within your department and an SU Disabled Students' Officer to represent you.

## Mature students

---

Many of our students are mature students, so we have a real understanding of the challenges that come when combining studies with other responsibilities. Meeting other mature students is a great support, so at Essex we organise welcome events, specifically for mature students.

## Mental and emotional health

---

Our Student Wellbeing and Inclusivity Service is here to help – you can access our drop-in service without making an appointment. We also offer counselling with a partner organisation that you can access via telephone or Zoom. We run workshops and seminars on topics such as managing study-related stress and anxiety, and can refer students to specialist services when needed.

## Commuting students

---

Many of our students from the local area commute daily to campus. It's important to know that everything on campus is for you too. It's your home from home, and you can join in university life to the full. When studying at home you will have access to a wide range of study materials via your online student portal, including teaching materials created by your Essex tutors.

For a full breakdown of support services, including information for care leaver students, students with children and more, visit our website.

### FIND OUT MORE

about support at Essex



# OUR COURSES

**FIND OUT MORE**  
about all our courses



From biochemistry to philosophy, and robotic engineering to drama, we've got the courses for you to flourish.

The information on the following pages outlines our A-level entry requirements but we consider a wide range of qualifications including international equivalents, BTECs, and QAA-approved Access to HE Diplomas. For more information please visit our website or get in touch with our Admissions Team.



## Foundation Years

---

For eligible UK and EU\* applicants we offer degrees with a foundation year. Typically, courses with a foundation year require 72 UCAS points from at least 2 A-levels, with some courses having additional requirements. We consider every application for a degree with a foundation year on its merits so please do get in touch. You can see which of our degrees are available

with a foundation year on the subjects list, just look out for a **F** symbol. Further information regarding entry requirements for our courses with a foundation year are available on our course web pages.

**[essex.ac.uk/subjects](https://www.essex.ac.uk/subjects)**

\* UK/home applicants and EU/EEA/Swiss nationals who have resided in the UK/EU/EEA/Switzerland/Gibraltar for a minimum of 3 years from 1 September in the year the course starts.



# Accounting

Course name	A-level entry	UCAS Tariff	Subjects A-level	Subjects GCSE	Course options
BSc Accounting	BBB-BBC	120-112	—	✓	P S F
BSc Accounting and Finance	BBB-BBC	120-112	—	✓	P S F
BSc Accounting and Management	BBB-BBC	120-112	—	✓	P S F
BSc Accounting and Economics	BBB-BBC	120-112	—	✓	P S F
Integrated Master in Accounting: Accounting and Finance	ABB-BBB	128-120	—	✓	P S

# Acting, producing and stage management

Course name	A-level entry	UCAS Tariff	Subjects A-level	Subjects GCSE	Course options
BA Acting*	EE	32	—	—	—
BA Acting (International)*	EE	32	—	—	—
BA Acting and Community Theatre*	EE	32	—	—	—
BA Acting and Contemporary Theatre*	EE	32	—	—	—
BA Acting and Stage Combat*	EE	32	—	—	—
BA Stage and Production Management*	EE	32	—	—	—
BA World Performance*	DD/EEE	48	—	—	—
BA Creative Producing (Theatre and Short Film)*	DD/EEE	48	—	—	—
Cert HE Acting and Theatre Arts*	E	16	—	—	—

\* Additional requirements, including audition or interview, required.  
More information can be found online.

**Key** (available course options)

P	S	4	F
Placement year option	Study abroad option	4-year course with compulsory year abroad	Foundation option

For courses with a tick in 'subjects A-level' or 'subjects GCSE', more information about specific requirements can be found online.

**FIND OUT MORE**



# Actuarial science

Course name	A-level entry	UCAS Tariff	Subjects A-level	Subjects GCSE	Course options
BSc Actuarial Science	BBB-BBC	120-112	✓	—	P S F
Integrated Master in Science: Actuarial Science and Data Science	ABB-BBB	128-120	✓	—	—

# American studies

Course name	A-level entry	UCAS Tariff	Subjects A-level	Subjects GCSE	Course options
BA American Studies (United States)	BBB-BBC	120-112	—	—	P S F
BA American Studies (United States) with Film	BBB-BBC	120-112	—	—	P S F
BA Criminology and American Studies	BBB-BBC	120-112	—	—	P S F

# Art history

Course name	A-level entry	UCAS Tariff	Subjects A-level	Subjects GCSE	Course options
BA Art History	BBB-BBC	120-112	—	—	P S F
BA Art History and History	BBB-BBC	120-112	—	—	P S F
BA Art History with Modern Languages	BBB-BBC	120-112	—	—	4 F
BA Film Studies and Art History	BBB-BBC	120-112	—	—	P S F
BA Literature and Art History	BBB-BBC	120-112	—	—	P S F
BA Philosophy and Art History	BBB-BBC	120-112	—	—	P S F
BA Curating	BBB-BBC	120-112	—	—	P S F
BA Art History, Visual Culture and Media Studies	BBB-BBC	120-112	—	—	P S F
BA Curating with Politics	BBB-BBC	120-112	—	—	P S F
BA Curating with History	BBB-BBC	120-112	—	—	P S F
BA Art History, Heritage and Museum Studies	BBB-BBC	120-112	—	—	P S F
BA Curating, Heritage and Human Rights	BBB-BBC	120-112	—	—	P S F
BA Art History and Modern Languages	BBB-BBC	120-112	—	—	4 F
BA Art History with Language Studies	BBB-BBC	120-112	✓	—	P S F
BA Art History and Language Studies	BBB-BBC	120-112	✓	—	P S F
Integrated Master in Art History	ABB-BBB	128-120	—	—	P S

# Biochemistry

Course name	A-level entry	UCAS Tariff	Subjects A-level	Subjects GCSE	Course options
BSc Biochemistry	BBB-BBC	120-112	✓	✓	P S F
Integrated Master in Science: Biochemistry and Biotechnology	ABB-BBB	128-120	✓	✓	P S

# Biological sciences

Course name	A-level entry	UCAS Tariff	Subjects A-level	Subjects GCSE	Course options
BSc Biological Sciences	BBB-BBC	120-112	✓	✓	P S F
BSc Ecology and Environmental Biology	BBB-BBC	120-112	✓	✓	P S F
BSc Global Sustainability	BBB-BBC	120-112	✓	✓	P S F
BSc Human Biology	BBB-BBC	120-112	✓	✓	P S F
BSc Microbiology	BBB-BBC	120-112	✓	✓	P S F
BSc Biotechnology	BBB-BBC	120-112	✓	✓	P S F

# Biomedical science

Course name	A-level entry	UCAS Tariff	Subjects A-level	Subjects GCSE	Course options
BSc Biomedical Sciences	BBB-BBC	120-112	✓	✓	P F
BSc Applied Biomedical Science (NHS placement)	BBB-BBC	120-112	✓	✓	4P
Integrated Master in Science: Biomedical Science	ABB-BBB	128-120	✓	✓	P

**Key** (available course options)

P	S	4P	4	F
Placement year option	Study abroad option	4-year course with compulsory year abroad or placement year	4-year course with compulsory year abroad	Foundation option

**FIND OUT MORE**



For courses with a tick in 'subjects A-level' or 'subjects GCSE', more information about specific requirements can be found online.



# Business and management

Course name	A-level entry	UCAS Tariff	Subjects A-level	Subjects GCSE	Course options
BBA Business Administration	BBB-BBC	120-112	—	✓	P S F
BSc Business Management	BBB-BBC	120-112	—	✓	P S F
BSc Management and Marketing	BBB-BBC	120-112	—	✓	P S F
BSc International Business and Finance	BBB-BBC	120-112	—	✓	P S F
BSc International Business and Entrepreneurship	BBB-BBC	120-112	—	✓	P S F
BSc Business Administration and Supply Chain Management	BBB-BBC	120-112	—	✓	P S F
BA Business Management and Modern Languages	BBB-BBC	120-112	—	✓	4
BA Business Management with a Modern Language	BBB-BBC	120-112	—	✓	4
BA Business Management and Language Studies	BBB-BBC	120-112	—	✓	—
BA Business Management with Language Studies	BBB-BBC	120-112	—	✓	—
BSc Business and Human Resource Management	BBB-BBC	120-112	—	✓	P S F
Integrated Master in Management: Marketing and Management	ABB-BBB	128-120	—	✓	—

# Childhood studies

Course name	A-level entry	UCAS Tariff	Subjects A-level	Subjects GCSE	Course options
BA Childhood Studies	BBB-BBC	120-112	—	—	P S F

# Computer science

Course name	A-level entry	UCAS Tariff	Subjects A-level	Subjects GCSE	Course options
BSc Computer Games	BBB-BBC	120-112	—	✓	P S F
BEng Computer Networks	BBB-BBC	120-112	—	✓	P S F
BSc Computer Science	BBB-BBC	120-112	—	✓	P S F
BEng Computer Systems Engineering	BBB-BBC	120-112	—	✓	P S F
BEng Computers with Electronics	BBB-BBC	120-112	—	✓	P S F
BEng Artificial Intelligence	BBB-BBC	120-112	—	✓	P S F
Integrated Master in Science: Computer Science	ABB-BBB	128-120	—	✓	P

# Creative writing

Course name	A-level entry	UCAS Tariff	Subjects A-level	Subjects GCSE	Course options
BA Creative Writing	BBB-BBC	120-112	✓	—	P S F
Integrated Master in Literature: Creative Writing	ABB-BBB	128-120	✓	—	—

**Key** (available course options)

P	S	4	F
Placement year option	Study abroad option	4-year course with compulsory year abroad	Foundation option

For courses with a tick in 'subjects A-level' or 'subjects GCSE', more information about specific requirements can be found online.

**FIND OUT MORE**



# Criminology

Course name	A-level entry	UCAS Tariff	Subjects A-level	Subjects GCSE	Course options
BA Criminology	BBB-BBC	120-112	—	—	P S F
BA Criminology with Social Psychology	BBB-BBC	120-112	—	—	P S
BA Criminology with Counselling Skills	BBB-BBC	120-112	—	—	P S
BA Criminology with Criminal Law	BBB-BBC	120-112	—	—	P S
BA Sociology and Criminology	BBB-BBC	120-112	—	—	P S F

# Data analytics

Course name	A-level entry	UCAS Tariff	Subjects A-level	Subjects GCSE	Course options
BSc Data Science and Analytics	BBB-BBC	120-112	✓	—	P S F
BSc Statistics	BBB-BBC	120-112	✓	—	P S F
Integrated Master in Science: Mathematics and Data Science	ABB-BBB	128-120	✓	—	—
Integrated Master in Science: Actuarial Science and Data Science	ABB-BBB	128-120	✓	—	—

# Drama

Course name	A-level entry	UCAS Tariff	Subjects A-level	Subjects GCSE	Course options
BA Drama	BBB-BBC	120-112	✓	—	P F
BA Drama and Literature	BBB-BBC	120-112	✓	—	P F
BA Film and Drama	BBB-BBC	120-112	✓	—	P F
BA Drama and Creative Writing	BBB-BBC	120-112	✓	—	P S F
Integrated Master in Literature: Drama and Scriptwriting	ABB-BBB	128-120	✓	—	P



# Economics

Course name	A-level entry	UCAS Tariff	Subjects A-level	Subjects GCSE	Course options
BA Economics	BBB-BBC	120-112	—	✓	P S F
BSc Economics	BBB-BBC	120-112	—	✓	P S F
BA Financial Economics	BBB-BBC	120-112	—	✓	P S F
BSc Financial Economics	BBB-BBC	120-112	—	✓	P S F
BA International Economics	BBB-BBC	120-112	—	✓	P S F
BSc International Economics	BBB-BBC	120-112	—	✓	P S F
BA Management Economics	BBB-BBC	120-112	—	✓	P S F
BSc Management Economics	BBB-BBC	120-112	—	✓	P S F
BSc Economics with Data Science	BBB-BBC	120-112	—	✓	P S F
BA Economics with Psychology	BBB-BBC	120-112	—	✓	P S F
BSc Economics with Psychology	BBB-BBC	120-112	—	✓	P S F
BA Economics with Language Studies	BBB-BBC	120-112	—	✓	F
BSc Economics with Mathematics	BBB-BBC	120-112	✓	—	P S F
BA History and Economics	BBB-BBC	120-112	—	✓	P S F
BA Financial Economics and Accounting	BBB-BBC	120-112	—	✓	P S F
BA Business Economics	BBB-BBC	120-112	—	✓	P S F
BA Economics with a Modern Language	BBB-BBC	120-112	—	✓	4
Integrated Master in Economics: Economics	ABB-BBB	128-120	—	✓	P S
Integrated Master in Economics: Financial Economics	ABB-BBB	128-120	—	✓	P S
Integrated Master in Economics: International Economics	ABB-BBB	128-120	—	✓	P S
Integrated Master in Economics: Management Economics	ABB-BBB	128-120	—	✓	P S

**Key** (available course options)

P	S	4	F
Placement year option	Study abroad option	4-year course with compulsory year abroad	Foundation option

For courses with a tick in 'subjects A-level' or 'subjects GCSE', more information about specific requirements can be found online.

**FIND OUT MORE**



## Engineering

Course name	A-level entry	UCAS Tariff	Subjects A-level	Subjects GCSE	Course options
BEng Electronic Engineering	BBB-BBC	120-112	✓	✓	P S F
BEng Communications Engineering	BBB-BBC	120-112	✓	✓	P S F
BEng Robotic Engineering	BBB-BBC	120-112	✓	✓	P S F
BEng Mechatronic Systems	BBB-BBC	120-112	✓	✓	P S F
BEng Neural Engineering with Psychology	BBB-BBC	120-112	—	✓	P S F
Integrated Master in Engineering: Electronic Engineering	ABB-BBB	128-120	✓	✓	P

## English language and linguistics

Course name	A-level entry	UCAS Tariff	Subjects A-level	Subjects GCSE	Course options
BA Teaching English as a Foreign Language (TEFL)	BBB-BBC	120-112	—	—	P S F
BA English Language and Linguistics	BBB-BBC	120-112	—	—	P S F
BA English Language and Literature	BBB-BBC	120-112	—	—	P S F
BA Linguistics	BBB-BBC	120-112	—	—	P S F
BA English Language with Media Communication	BBB-BBC	120-112	—	—	P S F
BA Linguistics with Data Science	BBB-BBC	120-112	—	✓	P S F
BA Language Studies and Linguistics	BBB-BBC	120-112	—	—	F
BA Modern Languages and Linguistics	BBB-BBC	120-112	—	—	4 F
BA Journalism and English Language	BBB-BBC	120-112	✓	—	S

## Entrepreneurship

Course name	A-level entry	UCAS Tariff	Subjects A-level	Subjects GCSE	Course options
BSc International Business and Entrepreneurship	BBB-BBC	120-112	—	✓	P S F

# Environment

Course name	A-level entry	UCAS Tariff	Subjects A-level	Subjects GCSE	Course options
BSc Global Sustainability	BBB-BBC	120-112	✓	✓	P S F
BSc Ecology and Environment Biology	BBB-BBC	120-112	✓	✓	P S F

# European studies

Course name	A-level entry	UCAS Tariff	Subjects A-level	Subjects GCSE	Course options
BA European Studies	BBB-BBC	120-112	—	—	4P F
BA European Studies with French	BBB-BBC	120-112	—	—	4 F
BA European Studies with German	BBB-BBC	120-112	—	—	4 F
BA European Studies with Italian	BBB-BBC	120-112	—	—	4 F
BA European Studies with Spanish	BBB-BBC	120-112	—	—	4 F
BA European Studies and Modern Languages	BBB-BBC	120-112	—	—	4 F
BA European Studies and Language Studies	BBB-BBC	120-112	—	—	F

# Film studies

Course name	A-level entry	UCAS Tariff	Subjects A-level	Subjects GCSE	Course options
BA Film Studies	BBB-BBC	120-112	✓	—	P S F
BA Film and Creative Writing	BBB-BBC	120-112	✓	—	P S F
BA Film Studies and Literature	BBB-BBC	120-112	✓	—	P S F

**Key** (available course options)

P	S	4P	4	F
Placement year option	Study abroad option	4-year course with compulsory year abroad or placement year	4-year course with compulsory year abroad	Foundation option

**FIND OUT MORE**



For courses with a tick in 'subjects A-level' or 'subjects GCSE', more information about specific requirements can be found online.

## Finance and banking

Course name	A-level entry	UCAS Tariff	Subjects A-level	Subjects GCSE	Course options
BSc Banking and Finance	BBB-BBC	120-112	—	✓	P S F
BSc Finance	BBB-BBC	120-112	—	✓	P S F
BSc Finance and Management	BBB-BBC	120-112	—	✓	P S F
BSc Accounting and Finance	BBB-BBC	120-112	—	✓	P S F
BSc International Business and Finance	BBB-BBC	120-112	—	✓	P S F
Integrated Master in Accounting: Accounting and Finance	ABB-BBB	128-120	—	✓	P S

## Genetics

Course name	A-level entry	UCAS Tariff	Subjects A-level	Subjects GCSE	Course options
BSc Genetics	BBB-BBC	120-112	✓	✓	P S F

## Global studies

Course name	A-level entry	UCAS Tariff	Subjects A-level	Subjects GCSE	Course options
BA Global Studies	BBB-BBC	120-112	—	—	P S F
BA Global Studies with Politics	BBB-BBC	120-112	—	—	P S F
BA Global Studies with Human Rights	BBB-BBC	120-112	—	—	P S F
BA Social Change	BBB-BBC	120-112	—	—	P S F
BA Global Studies with Business Management	BBB-BBC	120-112	—	—	P S F
BA Global Studies with Latin American Studies	BBB-BBC	120-112	—	—	P S F
BA Global Studies and Latin American Studies	BBB-BBC	120-112	—	—	P S F
BA Global Studies with Sustainability	BBB-BBC	120-112	—	—	P S F
BA Global Studies and Modern Languages	BBB-BBC	120-112	—	—	4
BA Global Studies and Language Studies	BBB-BBC	120-112	—	—	F



# Health

Course name	A-level entry	UCAS Tariff	Subjects A-level	Subjects GCSE	Course options
Certificate of Higher Education – Health and Social Care*	—	—	—	✓	—

\* A level 3 qualification is required for entry to this course.

# History

Course name	A-level entry	UCAS Tariff	Subjects A-level	Subjects GCSE	Course options
BA History	BBB-BBC	120-112	—	—	P S F
BA History and Criminology	BBB-BBC	120-112	—	—	P S F
BA History and Literature	BBB-BBC	120-112	—	—	P S F
BA History and Sociology	BBB-BBC	120-112	—	—	P S F
BA History with Film Studies	BBB-BBC	120-112	—	—	P S F
BA History with Human Rights	BBB-BBC	120-112	—	—	P S F
BA Modern History	BBB-BBC	120-112	—	—	P S F
BA Modern History and International Relations	BBB-BBC	120-112	—	—	P S F
BA Modern History and Politics	BBB-BBC	120-112	—	—	P S F
BA History and Heritage	BBB-BBC	120-112	—	—	P S F
BA History and Law	BBB-BBC	120-112	—	—	P S F
BA History and Drama	BBB-BBC	120-112	—	—	P S F
Integrated Master in History: History	ABB-BBB	128-120	—	—	P S

**Key** (available course options)

P	S	4	F
Placement year option	Study abroad option	4-year course with compulsory year abroad	Foundation option

For courses with a tick in 'subjects A-level' or 'subjects GCSE', more information about specific requirements can be found online.

**FIND OUT MORE**



# Hospitality and events management

Course name	A-level entry	UCAS Tariff	Subjects A-level	Subjects GCSE	Course options
BA Hotel Management*	CCC	96	—	✓	—
BA Events Management with Hospitality*	CCC	96	—	✓	—
BA Hospitality Management	CCC	96	—	✓	S
BA Events Management	CCC	96	—	✓	S
FdA Hospitality Management	CC	64	—	✓	—
FdA Events Management	CC	64	—	✓	—
FdA Tourism	CC	64	—	✓	—
BA Tourism	CCC	96	—	✓	S

\* 2 year accelerated course.

# Human rights

Course name	A-level entry	UCAS Tariff	Subjects A-level	Subjects GCSE	Course options
BA Curating, Heritage and Human Rights	BBB-BBC	120-112	—	—	P S F
BA Philosophy with Human Rights	BBB-BBC	120-112	—	—	P S F
BA Politics with Human Rights	BBB-BBC	120-112	—	—	P S F
BA Sociology with Human Rights	BBB-BBC	120-112	—	—	P S
BA Global Studies with Human Rights	BBB-BBC	120-112	—	—	P S F
BA History with Human Rights	BBB-BBC	120-112	—	—	P S F
BA Journalism with Human Rights	BBB-BBC	120-112	✓	—	P S
LLB Law with Human Rights	BBB-BBC	120-112	✓	—	P F

# Journalism

Course name	A-level entry	UCAS Tariff	Subjects A-level	Subjects GCSE	Course options
BA Multimedia Journalism	BBB-BBC	120-112	✓	✓	P S
BA Journalism and Criminology	BBB-BBC	120-112	✓	—	P S
BA Journalism and Sociology	BBB-BBC	120-112	✓	—	P S
BA Journalism and English Language	BBB-BBC	120-112	✓	—	P S
BA Journalism and Literature	BBB-BBC	120-112	✓	—	P S
BA Journalism with Human Rights	BBB-BBC	120-112	✓	—	P S
BA Journalism and Politics	BBB-BBC	120-112	✓	—	P S
BA Film and Journalism	BBB-BBC	120-112	✓	—	P S F
BA Journalism and Modern Languages	BBB-BBC	120-112	✓	—	4

# Law

Course name	A-level entry	UCAS Tariff	Subjects A-level	Subjects GCSE	Course options
LLB Law	BBB-BBC	120-112	✓	—	P S F
LLB Law with Human Rights	BBB-BBC	120-112	✓	—	P S F
LLB Law with Philosophy	BBB-BBC	120-112	✓	—	P S F
LLB Law with Politics	BBB-BBC	120-112	✓	—	P S F
LLB Law with Business	BBB-BBC	120-112	✓	—	P S F
LLB Law with Criminology	BBB-BBC	120-112	✓	—	P S F
LLB Law with Literature	BBB-BBC	120-112	✓	—	P S F
LLB Law with History	BBB-BBC	120-112	✓	—	P S F
LLB Law with Finance	BBB-BBC	120-112	✓	✓	P S F
LLB English and French Law (Licence)	ABB	N/A	✓	—	—
Integrated Master in Law: Law	ABB-BBB	128-120	✓	—	P S
LLB Law (Senior Status)*	—	—	—	—	—

\* A Lower Second class undergraduate degree is required for entry to this course (this is a two-year conversion course for graduates in other disciplines).

# Liberal arts

Course name	A-level entry	UCAS Tariff	Subjects A-level	Subjects GCSE	Course options
BA Liberal Arts	BBB-BBC	120-112	—	—	P S F
BA Social Change	BBB-BBC	120-112	—	—	P S F

**Key** (available course options)

P	S	4	F
Placement year option	Study abroad option	4-year course with compulsory year abroad	Foundation option

For courses with a tick in 'subjects A-level' or 'subjects GCSE', more information about specific requirements can be found online.

**FIND OUT MORE**



## Literature

Course name	A-level entry	UCAS Tariff	Subjects A-level	Subjects GCSE	Course options
BA English and United States Literature	BBB-BBC	120-112	✓	—	P S F
BA English Literature	BBB-BBC	120-112	✓	—	P S F
BA Literature and Sociology	BBB-BBC	120-112	✓	—	P S F
BA Literature and Creative Writing	BBB-BBC	120-112	✓	—	P S F
BA English and Comparative Literature	BBB-BBC	120-112	✓	—	P S F
BA Literature with Law	BBB-BBC	120-112	✓	—	P S F
Integrated Master in Literature: Literature	ABB-BBB	128-120	✓	—	—
Integrated Master in Literature: Literature and Creative Writing	ABB-BBB	128-120	✓	—	—

## Marine biology

Course name	A-level entry	UCAS Tariff	Subjects A-level	Subjects GCSE	Course options
BSc Marine Biology	BBB-BBC	120-112	✓	✓	P S F
Integrated Master in Science: Tropical Marine Biology	ABB-BBB	128-120	✓	✓	P S

## Marketing

Course name	A-level entry	UCAS Tariff	Subjects A-level	Subjects GCSE	Course options
BSc Marketing	BBB-BBC	120-112	—	✓	P S F
BSc Management and Marketing	BBB-BBC	120-112	—	✓	P S F
Integrated Master in Management: Marketing and Management	ABB-BBB	128-120	—	✓	P S



# Mathematics

Course name	A-level entry	UCAS Tariff	Subjects A-level	Subjects GCSE	Course options
BSc Mathematics	BBB-BBC	120-112	✓	—	P S F
BSc Economics and Mathematics	BBB-BBC	120-112	✓	—	P S F
BSc Finance and Mathematics	BBB-BBC	120-112	✓	—	P S F
BSc Mathematics with Computing	BBB-BBC	120-112	✓	—	P S F
BSc Mathematics with Physics	BBB-BBC	120-112	✓	—	P S F
Integrated Master in Science: Mathematics and Data Science	ABB-BBB	128-120	✓	—	—
Integrated Master in Mathematics: Mathematics	ABB-BBB	128-120	✓	—	—

**Key** (available course options)

<b>P</b>	<b>S</b>	<b>4</b>	<b>F</b>
Placement year option	Study abroad option	4-year course with compulsory year abroad	Foundation option

For courses with a tick in 'subjects A-level' or 'subjects GCSE', more information about specific requirements can be found online.

**FIND OUT MORE**



# Modern languages

Course name	A-level entry	UCAS Tariff	Subjects A-level	Subjects GCSE	Course options
BA Modern Languages	BBB-BBC	120-112	✓	—	4 F
BA Modern Languages and English Language	BBB-BBC	120-112	✓	—	4 F
BA Modern Languages and Linguistics	BBB-BBC	120-112	✓	—	4 F
BA Modern Languages and Teaching English as a Foreign Language	BBB-BBC	120-112	✓	—	4 F
BA Modern Languages with Latin American Studies	BBB-BBC	120-112	✓	—	4 F
BA Modern Languages Translation, Interpreting and Cultural Mediation	BBB-BBC	120-112	✓	—	4 F
BA International Relations and Modern Languages	BBB-BBC	120-112	✓	—	4 F
BA Spanish, Portuguese and Brazilian Studies	BBB-BBC	120-112	✓	—	4 F
BA Journalism and Modern Languages	BBB-BBC	120-112	✓	—	4
BA Language Studies	BBB-BBC	120-112	✓	—	F
BA Language Studies with Latin American Studies	BBB-BBC	120-112	✓	—	F
BA International Relations and Language Studies	BBB-BBC	120-112	✓	—	F
BA Language Studies and Teaching English as a Foreign Language	BBB-BBC	120-112	✓	—	F
Integrated Master in Modern Languages: Modern Languages (Translation)	ABB-BBB	128-120	✓	—	4

# Nursing: adult or mental health

Course name	A-level entry	UCAS Tariff	Subjects A-level	Subjects GCSE	Course options
BSc Nursing (Adult)*	BBB-BBC	120-112	—	✓	S
BSc Nursing (Mental Health)*	BBB-BBC	120-112	—	✓	S
Integrated Master in Science: Nursing (Dual Award in Adult and Mental Health)*	BBB-BBC	120-112	—	✓	—

\* Additional requirements and checks, including interview and DBS, required. More information can be found online.

# Occupational therapy

Course name	A-level entry	UCAS Tariff	Subjects A-level	Subjects GCSE	Course options
BSc Occupational Therapy*	BBB-BBC	120-112	—	✓	—

\* Additional requirements and checks, including interview and DBS, required. More information can be found online.

# Oral health science

Course name	A-level entry	UCAS Tariff	Subjects A-level	Subjects GCSE	Course options
FdSc Oral Health Science*	CC	N/A	✓	✓	—
BSc Oral Health Science**	—	—	—	—	—

\* Additional requirements and checks, including interview and DBS, required. More information can be found online.

\*\* This course is only open to existing registered dental hygienists. More information can be found online.

**Key** (available course options)

P	S	4	F
Placement year option	Study abroad option	4-year course with compulsory year abroad	Foundation option

For courses with a tick in 'subjects A-level' or 'subjects GCSE', more information about specific requirements can be found online.

**FIND OUT MORE**



# Philosophy

Course name	A-level entry	UCAS Tariff	Subjects A-level	Subjects GCSE	Course options
BA Philosophy	BBB-BBC	120-112	—	—	P S F
BA Philosophy and History	BBB-BBC	120-112	—	—	P S F
BA Philosophy and Law	BBB-BBC	120-112	—	—	P S F
BA Philosophy and Literature	BBB-BBC	120-112	—	—	P S F
BA Philosophy and Politics	BBB-BBC	120-112	—	—	P S F
BA Philosophy and Sociology	BBB-BBC	120-112	—	—	P S F
BA Philosophy with Human Rights	BBB-BBC	120-112	—	—	P S F
BA Philosophy, Religion and Ethics	BBB-BBC	120-112	—	—	P S F
BA Philosophy with Business Management	BBB-BBC	120-112	—	—	P S F
BA Philosophy and Art History	BBB-BBC	120-112	—	—	P S F
BA Continental Philosophy	BBB-BBC	120-112	—	—	P S F
BA Philosophy, Ethics and Sustainability	BBB-BBC	120-112	—	—	P S F
Integrated Master in Philosophy: Philosophy	ABB-BBB	128-120	—	—	P S

# Physiotherapy

Course name	A-level entry	UCAS Tariff	Subjects A-level	Subjects GCSE	Course options
BSc Physiotherapy*	ABB	N/A	✓	✓	—

\* Additional requirements and checks, including interview and DBS, required. More information can be found online.



# Politics and international relations

Course name	A-level entry	UCAS Tariff	Subjects A-level	Subjects GCSE	Course options
BA Politics	BBB-BBC	120-112	—	—	P S F
BA Politics with Human Rights	BBB-BBC	120-112	—	—	P S F
BA International Development	BBB-BBC	120-112	—	—	P S F
BA International Relations	BBB-BBC	120-112	—	—	P S F
BA Politics and International Relations	BBB-BBC	120-112	—	—	P S
BSc Politics and International Relations	BBB-BBC	120-112	—	—	P S
BA Politics with Business	BBB-BBC	120-112	—	—	P S
BSc Politics with Business	BBB-BBC	120-112	—	—	P S
BA Global Politics	BBB-BBC	120-112	—	—	P S
BA Politics with Criminology	BBB-BBC	120-112	—	—	P S
BA International Relations and Modern Languages	BBB-BBC	120-112	—	—	S 4 F
BSc Politics with Data Science	BBB-BBC	120-112	—	✓	P S
BSc Economics and Politics	BBB-BBC	120-112	—	✓	P S F
BA Philosophy, Politics and Economics	BBB-BBC	120-112	—	✓	P S F
Integrated Master in Politics: International Relations	ABB-BBB	128-120	—	—	P S
Integrated Master in Politics: Politics and International Relations	ABB-BBB	128-120	—	—	P S

**Key** (available course options)

<b>P</b>	<b>S</b>	<b>4</b>	<b>F</b>
Placement year option	Study abroad option	4-year course with compulsory year abroad	Foundation option

**FIND OUT MORE**



For courses with a tick in 'subjects A-level' or 'subjects GCSE', more information about specific requirements can be found online.

# Psychology

Course name	A-level entry	UCAS Tariff	Subjects A-level	Subjects GCSE	Course options
BA Psychology	BBB-BBC	120-112	—	✓	P S F
BSc Psychology	BBB-BBC	120-112	—	✓	P S F
BSc Psychology with Cognitive Neuroscience	BBB-BBC	120-112	—	✓	P S F
BSc Psychology with Economics	BBB-BBC	120-112	—	✓	P S F
Integrated Master in Science: Psychology with Advanced Research Methods	ABB-BBB	128-120	—	✓	P S
Integrated Master in Science: Psychology with Cognitive Neuroscience	ABB-BBB	128-120	—	✓	P S

# Psychosocial and psychoanalytic studies

Course name	A-level entry	UCAS Tariff	Subjects A-level	Subjects GCSE	Course options
BA Psychodynamic Practice	BBB-BBC	120-112	—	—	S F
BA Psychosocial and Psychoanalytic Studies	BBB-BBC	120-112	—	—	P S F
FdA Therapeutic Communication and Therapeutic Organisations*	—	—	—	—	—
BA Therapeutic Communication and Therapeutic Organisations**	—	—	—	—	—

\* This course is available via face to face teaching or online. Entry requirements can be found online.

\*\* Foundation Degree in Therapeutic Communication and Therapeutic Organisations is required.

# Robotics

Course name	A-level entry	UCAS Tariff	Subjects A-level	Subjects GCSE	Course options
BEng Robotic Engineering	BBB-BBC	120-112	✓	✓	P S F
BEng Mechatronic Systems	BBB-BBC	120-112	✓	✓	P S F
BSc Artificial Intelligence	BBB-BBC	120-112	—	✓	P S F

# Sociology

Course name	A-level entry	UCAS Tariff	Subjects A-level	Subjects GCSE	Course options
BA Sociology	BBB-BBC	120-112	—	—	P S F
BA Sociology and Criminology	BBB-BBC	120-112	—	—	P S F
BA Sociology and Politics	BBB-BBC	120-112	—	—	P S
BA Sociology with Human Rights	BBB-BBC	120-112	—	—	P S
BA Media and Digital Culture	BBB-BBC	120-112	—	—	P S F
BA Sociology with Social Psychology	BBB-BBC	120-112	—	—	P S
BSc Sociology (Applied Quantitative Research)	BBB-BBC	120-112	—	—	P S
BA Sociology and Health	BBB-BBC	120-112	—	—	P S F
BA Social Sciences	BBB-BBC	120-112	—	—	P S F
BSc Sociology with Data Science	BBB-BBC	120-112	—	✓	P S F

# Social work

Course name	A-level entry	UCAS Tariff	Subjects A-level	Subjects GCSE	Course options
BA Social Work*	BBB-BBC	120-112	—	✓	—

\* Additional requirements and checks, including interview and DBS, required.  
More information can be found online.

**Key** (available course options)

P	S	4	F
Placement year option	Study abroad option	4-year course with compulsory year abroad	Foundation option

For courses with a tick in 'subjects A-level' or 'subjects GCSE', more information about specific requirements can be found online.

**FIND OUT MORE**



## Speech and language therapy

Course name	A-level entry	UCAS Tariff	Subjects A-level	Subjects GCSE	Course options
BSc Speech and Language Therapy*	BBB-BBC	120-112	—	✓	P S

\* Additional requirements and checks, including interview and DBS, required.  
More information can be found online.

## Sport and exercise

Course name	A-level entry	UCAS Tariff	Subjects A-level	Subjects GCSE	Course options
BSc Sports and Exercise Science	BBB-BBC	120-112	✓	✓	P S F
BSc Sports Performance and Coaching	BBB-BBC	120-112	✓	✓	P S F
BSc Sport and Exercise Psychology	BBB-BBC	120-112	✓	✓	P S
Integrated Master in Science: Sports and Exercise Science	ABB-BBB	128-120	✓	✓	P S

## Sports therapy

Course name	A-level entry	UCAS Tariff	Subjects A-level	Subjects GCSE	Course options
BSc Sport Therapy	BBB-BBC	120-112	✓	✓	P S



# HOW TO APPLY



For further information on any of the topics listed, visit our website. If you have any other questions, please get in touch with our Undergraduate Admissions Team.

# The application process

## How do I apply?

Applications for the majority of our courses can be made via either [UCAS.com](https://www.ucas.com) or our Direct Admissions form on our website.

[essex.ac.uk/Direct](https://www.essex.ac.uk/Direct)

If you are applying to other institutions or already have a UCAS application, you will not be able to use our Direct Admissions form.

There may be additional elements to the application process for courses at East 15 Acting School. Please visit the East 15 applying web pages for further details.

[east15.ac.uk/undergraduate/applying-to-east-15](https://www.east15.ac.uk/undergraduate/applying-to-east-15)

## When should I apply?

If you are applying for 2025 entry, you can do so from September 2024 onwards. Applications for the majority of our courses will remain open until 30 June 2025. From July, you can apply using Clearing if the course is still open. A small number of our courses may close on or after the UCAS equal consideration deadline on 29 January 2025. More information about application deadlines are available on the UCAS website.

[ucas.com/undergraduate/applying-university/ucas-undergraduate-when-apply](https://www.ucas.com/undergraduate/applying-university/ucas-undergraduate-when-apply)

## What are the next steps?

When we receive your application, it will be considered by our Admissions team. We will take into account your whole application – including your qualifications, personal statement and reference.

If you applied through UCAS, your UCAS Hub will officially inform you when a decision has been made on your application. Once you've received a decision from all your choices, UCAS will ask you to accept one offer as your firm choice and one offer as your insurance choice via UCAS Hub.

If you applied via our Direct Admissions form we will be in touch with you via email. If we make you an offer, we will let you know when your offer letter is available on your myEssex portal, and you will need to follow the instructions provided in your offer letter to accept your offer via your myEssex portal.

## Interviews

Some of our courses require a compulsory interview before an offer can be made. If you have applied to one of our degrees which requires an interview, and you are successful in being invited for interview, we will be in touch via email.

**FIND OUT MORE**  
about undergraduate  
applications



## Offer Holder Days

If you receive an offer from us, you will be invited to attend an Offer Holder Day. This will offer you the chance to find out more about the University and your course.

[essex.ac.uk/visit-us/offer-holder-days](https://essex.ac.uk/visit-us/offer-holder-days)

## Contextual Offers

We are committed to ensuring that all students with the merit and potential to benefit from an Essex education are supported to do so. We consider a range of contextual information from UCAS to make contextual offers, and you may also be made a contextual offer if you attend an Offer Holder Day. If you are eligible for a contextual offer your offer may be up to two A-level grades, or equivalent, below our standard conditional offer.

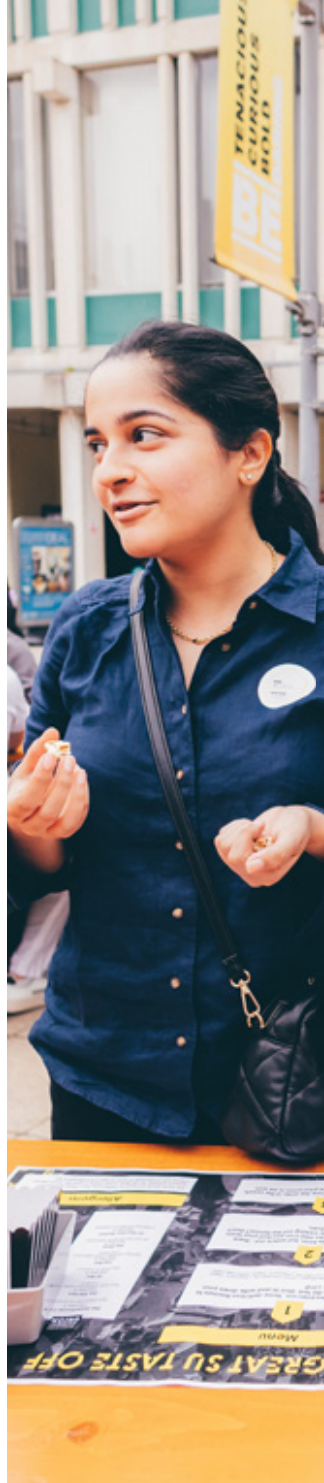
Eligibility criteria and more information is available in the Contextual Offers Policy on our website.

[essex.ac.uk/undergraduate/applying-to-essex](https://essex.ac.uk/undergraduate/applying-to-essex)

## Confirming your place

If your offer is conditional and you go on to meet the conditions specified within the communicated deadlines, we'll confirm your place if you have accepted us as your firm or insurance choice. If your results don't quite meet the conditions, we may still be able to confirm your place, or you may be offered an alternative course.

**FIND OUT MORE**  
about undergraduate applications





# Entry requirements

## UK students

Typical entry requirements are on our website. [essex.ac.uk/undergraduate/our-courses](https://www.essex.ac.uk/undergraduate/our-courses)

Entry requirements for courses which include a foundation year are lower than those listed on the subject pages, for our BA/BSc courses. Please see our website for entry requirements for our courses with a foundation year option.

The wide range of qualifications that we consider include the following:

- A-levels
- BTEC qualifications
- CTEC qualifications
- International Baccalaureate Diploma and Certificates
- QAA-approved Access to HE Diplomas
- Open University courses
- Professional qualifications
- T-levels

If you have not already completed your qualifications, our typical offer will require you to achieve specific grades in three A-levels (or a certain number of UCAS tariff points from a minimum of 2 full A-levels or equivalent). We are also happy to consider your application if you are taking a mixture of A-levels and BTECs, or qualifications other than A-levels. If your results fall short of the offer level by a small margin, your results in other qualifications such as the Extended Project, a Core Maths qualification or an additional AS-level may be taken into account. We want you to stand the best chance of benefiting from an Essex education. We will also consider your application if you are retaking one or more exams.



## Requirements for all applicants

Our general entry requirements are outlined in our Undergraduate Admissions Policy and the Regulations Relating to Admissions which are available on our applying webpages.

[essex.ac.uk/undergraduate/plying-to-essex](https://www.essex.ac.uk/undergraduate/plying-to-essex)

Some courses also have additional A-level or GCSE subject requirements which you'll find on the relevant course pages.

[essex.ac.uk/undergraduate/our-courses](https://www.essex.ac.uk/undergraduate/our-courses)

## EU and international students

If you're from outside the UK, we can make offers based on EU and international qualifications that are considered equivalent to our standard A-level offer.

[essex.ac.uk/international/plying-to-essex](https://www.essex.ac.uk/international/plying-to-essex)

## English language requirements

You are required to have GCSE English at grade C/4 or above (or equivalent). You can demonstrate your level of English language by achieving a specified score in IELTS or another equivalent test that we accept. You don't need to achieve this level before making your application, but it will be one of the conditions of your offer.

For current details of our English language requirements, including UK Visas and Immigration minimum component scores, please visit our website.

[essex.ac.uk/undergraduate/plying-to-essex](https://www.essex.ac.uk/undergraduate/plying-to-essex)

## Pre-sessional and English language courses

We offer pre-sessional English language courses at the University of Essex International College (in partnership with Kaplan International Pathways) which can be taken before your degree if you are an EU or international student and do not meet our English language entry requirements. Upon successful completion of the pre-sessional you won't need to retake an additional English language qualification, and if you've met all other offer conditions you will be able to proceed on to your degree.

[essex.ac.uk/international/pre-sessional](https://www.essex.ac.uk/international/pre-sessional)

## Modern languages

First-language speakers of a modern language will not be able to study that language as part of a modern language degree. To study Portuguese as a major language, applicants must have either an A-level (or equivalent) in Italian, Spanish or Portuguese, or have a first-language fluency in Italian, Romanian or Spanish.



## Other useful information

---

### Immigration and applying for a visa

If you require a visa to study in the UK, you'll need to apply under the student route of the UK Government's Points Based Immigration System (PBIS).

EU students will need to apply for entry clearance under the UK's Student Immigration Rules, unless you already have settlement. For up-to-date information check our website.

**[essex.ac.uk/international/immigration-and-visas](https://www.essex.ac.uk/international/immigration-and-visas)**

### Pathways courses

Many courses are available to UK and EU applicants with a foundation year, see page 61.

### Deferred entry

If you wish to take a gap year, you can apply for deferred entry for the majority of our courses. You can apply in the normal way but you should indicate your year of entry on your UCAS application or Direct Admissions form. Applications for deferred entry will be considered on the same basis as those for entry in the year which you apply.

### DBS and occupational health checks

Some courses require you to undergo a Disclosure and Barring Service check (DBS), when working with children and/or vulnerable adults, and an occupational health check. If this is a requirement of a course, it will be stated on our website course pages.

**[essex.ac.uk/undergraduate/our-courses](https://www.essex.ac.uk/undergraduate/our-courses)**

### Disability and health

When you apply you can declare whether you have a disability or health issues so we can provide support. Declaring a disability or health issue will not form part of our decision making and we are dedicated to offering equal opportunities to all. We have a team of disability and wellbeing advisors, dyslexia tutors, and other specialist staff.

**[essex.ac.uk/student/access-and-disability](https://www.essex.ac.uk/student/access-and-disability)**

### Admissions Policy

Our Undergraduate Admissions Policy, is available on our website.

**[essex.ac.uk/-/media/documents/admissions/undergraduate-admissions-policy.pdf](https://www.essex.ac.uk/-/media/documents/admissions/undergraduate-admissions-policy.pdf)**

For any more information please visit our website.

**[essex.ac.uk/undergraduate/applying-to-essex](https://www.essex.ac.uk/undergraduate/applying-to-essex)**

The information included here is correct as of January 2024.

# FEES AND FUNDING



Your tuition fees are used to provide you with a transformational education. They help us to create the stimulating and cutting-edge environment that supports the world-class research and education we offer at Essex.

## FIND OUT MORE

about funding



## Tuition fees

---

### UK students

- Our fees for the academic year 2025-26 for UK and Channel Islands students will be £9,250.
- Fees may increase for each academic year of study. For full-time undergraduate students with a home fee status any fee increases during your programme of study will be limited to the annual increase in the RPI-X index.

### International and EU students

- Our full-time international and EU fees for the academic year 2025-26 are £18,585-£27,500. For a full list of all international tuition fees please check our website.
- You may be able to get a tuition fee loan and help with living costs if you're from an EU country, Iceland, Liechtenstein, Norway or Switzerland. Use the student finance calculator to see what finance you can get.  
[gov.uk/student-finance](https://www.gov.uk/student-finance)  
[gov.uk/student-finance-calculator](https://www.gov.uk/student-finance-calculator)

- For students commencing their studies in the 2025-26 academic year, your fees will increase for each year of study. This annual increase will be either 5% or the annual increase in the RPI-X index, whichever is higher. If you would like advice on whether you'd be considered as an international student in relation to your tuition fees please contact our Undergraduate Admissions Office.

**[admit@essex.ac.uk](mailto:admit@essex.ac.uk)**

- The UK Council for International Student Affairs (UKCISA) can also give you free, independent advice and information on fee statuses.
- If you require a student visa to study in the UK, as part of the visa application process you may be asked to produce evidence of your ability to pay tuition fees and to cover living expenses during your course. Find out more about the current Home Office requirements on our website.

**[ukcisa.org.uk](http://ukcisa.org.uk)**

**[essex.ac.uk/immigration](http://essex.ac.uk/immigration)**

## Student loans

---

### Access to loans for UK students

- The UK Government provides UK students with a tuition fee loan (subject to eligibility criteria), meaning you will not have to pay your tuition fees upfront or during your course.
- UK students can also take out a maintenance loan to help cover living expenses for your time at university.
- Loan repayments only begin when you earn over a certain amount, and will stop if your income drops below that figure.

**[gov.uk/student-finance-calculator](http://gov.uk/student-finance-calculator)**

- If you've previously studied at a higher education institution this may affect the amount of financial support available to you. Please contact our Student Finance Team with any queries about this or anything else funding related.

**[funding@essex.ac.uk](mailto:funding@essex.ac.uk)**

## Scholarships and bursaries

---

- Some students are eligible for scholarships and bursaries. This includes support for care leavers, those from lower income households, and students with refugee status. Find out more about funding opportunities on our website.

**[essex.ac.uk/scholarships](http://essex.ac.uk/scholarships)**

## Part-time work

---

- Many of our students undertake part-time work alongside their studies. If you're interested in earning some extra money during your studies there are plenty of part-time work opportunities at Essex.

## Healthcare grants

---

- Students studying the nursing and allied health subjects will receive a non-repayable and non-means tested (universal) grant of at least £5,000 a year, in addition to existing mainstream student support. Funding will be offered to continuing students as well as new course.



# OUR PARTNERS



We are committed to making education available through a range of provisions, working closely with partners to develop and maintain learning opportunities.



# University of Essex Online

---

University of Essex Online degree courses give you the opportunity to study for your degree via distance learning, allowing you to gain a qualification from a respected university whilst fitting your studies around work and personal commitments. We have regular intakes throughout the year, and our entry requirements recognise work experience as well as previous academic achievements.

Contact us or visit our website for more information.

+44 (0)800 0527 526

[\*\*enquiries@online.essex.ac.uk\*\*](mailto:enquiries@online.essex.ac.uk)  
[\*\*online.essex.ac.uk\*\*](http://online.essex.ac.uk)



## University of Essex International College

---

The University of Essex International College, based at the University's Colchester Campus, is operated by Kaplan International Pathways, a partner institution of the University of Essex.

The College provides pathway courses and pre-sessional English language courses that prepare international students for progression to a university degree course.

Successful completion of a Foundation Certificate (available to international students in the subject areas of humanities, social sciences and science and health) would enable progression to the first year of a relevant degree.

An International Year One course (available to international and EU students, offered in business, computer science, economics, law, life sciences, international relations, politics and psychology) would enable progression to the second year of a relevant degree at the University.

Students who successfully complete their course at International College will graduate with a degree from the University of Essex.

[\*\*kaplanpathways.com/  
colleges/university-essex-  
international-college/\*\*](http://kaplanpathways.com/colleges/university-essex-international-college/)



# IMPORTANT INFORMATION



## About this prospectus

---

### **When we might make changes to advertised courses and other information**

This prospectus tries to answer your questions about life and academic provision on offer at the University of Essex. The University makes every effort to ensure the prospectus is accurate at the time it is printed. In exceptional circumstances, it can be necessary to make changes, for example to courses, facilities or fees due to legitimate staffing, financial, regulatory or academic reasons. Examples of such reasons include a change of law or regulatory requirements, departure of key personnel, change in government policy or to comply with requirements from a relevant accrediting body or validating university. Changes to courses may for example consist of variations to

the content and method of delivery of programmes, changes to the method of assessment, courses and other services, to discontinue programmes, courses and other services and to merge or combine programmes or courses. If a course change or closure is proposed in such circumstances the University will take all reasonable steps to minimise disruption to students or applicants. This will include informing students or applicants of the changes in advance, offering alternative options where suitable, and giving them appropriate opportunity to comment on the proposals.

A course would only be closed in exceptional circumstances. If it is ever necessary to close a course the University's preferred approach would be to continue to teach current

students on that course until they have completed their studies. If in exceptional circumstances that is not possible, the University will explore other options with the affected students or applicants for example by considering whether those students or applicants can be offered places on alternative courses, or whether their studies can be completed at another institution. The University would inform and engage with you if your course was to be discontinued, and would provide you with options, where appropriate, in line with our Compensation and Refund Policy. [essex.ac.uk/-/media/documents/about/governance/ofs/compensation-and-refund-policy.pdf](https://www.essex.ac.uk/-/media/documents/about/governance/ofs/compensation-and-refund-policy.pdf)

For more information please refer to our Student Protection Plan: [essex.ac.uk/-/media/documents/about/governance/ofs/student-protection-plan.pdf](https://www.essex.ac.uk/-/media/documents/about/governance/ofs/student-protection-plan.pdf)

### **No liability for matters outside our control**

The University cannot be held responsible for failure/delay in performing obligations caused by things outside our control. This includes but is not limited to: strikes, other industrial action, staff illness, severe weather, fire, civil commotion, riot, invasion, terrorist attack or threat of terrorist attack, war (whether declared or not), natural disaster, restrictions imposed by government or public authorities, epidemic or pandemic disease, or failure of public utilities or transport systems. In the above context “the University” also includes the University’s officers, employees and agents, and those provisions may be relied on by those officers, employees and agents.

## **Admissions Policy**

---

Applicants are considered in line with the University’s Undergraduate Admissions Policy and the regulations relating to admissions (listed under Academic Regulations), which can be found online.



**LEARN MORE**  
about our Undergraduate Admissions Policy



**FIND OUT MORE**  
about our Academic Regulations

## **The student contract**

---

If your application to the University of Essex is successful, by accepting the offer you will be entering into a legal contract with us, subject to fulfilling any conditions included in your offer. Your rights and obligations to us and our rights and obligations to you will be detailed in the information that we provide once the offer has been made. You should read this information carefully. Applicants and registered students must comply with University regulations, codes of conduct, and policies relating to IT, the library and academic matters.



## University regulations

---

The University regulations are available at:

**[essex.ac.uk/about/governance/regulations](https://essex.ac.uk/about/governance/regulations)**

The procedures, rules and regulations of the University, governing how it operates, are set out in the Charter, Statutes and Ordinances and in the University policies, available at: **[essex.ac.uk/about/governance/charter-statutes-and-ordinances](https://essex.ac.uk/about/governance/charter-statutes-and-ordinances)**

**[essex.ac.uk/governance-and-strategy/governance/policies](https://essex.ac.uk/governance-and-strategy/governance/policies)**

## Tuition fee increases during your studies

---

Fees for UK and Channel Islands students commencing their studies in 2025 were set at £9,250. In previous years, the tuition fee has increased for each academic year of study. Increases were limited to the annual increase in the RPI-X index. Fees for full-time undergraduate students with a Home fee status remain subject to UK Government approval. For full-time undergraduate students with an international fee status, this annual increase will be 5% or the annual increase in the RPI-X index, whichever is the higher.

**[essex.ac.uk/undergraduate/fees-and-funding](https://essex.ac.uk/undergraduate/fees-and-funding)**

## Complaints procedure

---

The University is committed to equality of opportunity for all applicants. Admissions policies, procedures and processes are designed to ensure that all applicants are considered fairly, consistently and in accordance with professional standards. The Undergraduate Admissions Team strives to provide a high quality experience for all applicants throughout the admissions cycle. In the event that an applicant is dissatisfied with any aspect of the University's admissions process, procedure or policy and wants to submit a formal complaint, they can do so via the Complaints Policy for Applicants. This policy can be found in full on our Undergraduate Applying webpages: **[essex.ac.uk/-/media/documents/admissions/complaints-policy-for-applicants.pdf](https://essex.ac.uk/-/media/documents/admissions/complaints-policy-for-applicants.pdf)**

## Policy Statement on Equality and Diversity

---

The University of Essex fosters good relations between people who share a relevant protected characteristic and those who do not, celebrates diversity, challenges inequality and is committed to nurturing an inclusive and diverse community that is open to all who have the potential to benefit from membership of it, and which ensures equality of opportunity for all its members. We expect all our campus communities, employees, workers, contractors, students, invitees and visitors to be treated, and to treat others, with dignity and respect. We have a zero-tolerance approach to discrimination, harassment and bullying.

Zero tolerance means that (i) we will take action and (ii) the action will be proportionate to the circumstances of the case. We are committed to meeting our obligations under the Equality Act 2010, which requires the University show no discrimination as required by law on account of age, disability, gender reassignment, marriage and civil partnership, pregnancy and maternity, race, religion or belief, sex, and sexual orientation. The University will always act lawfully and this may include taking action to support people with particular protected characteristics, including disability and sex. In addition to its obligations under the EA, the University shall adopt policies, practices, and procedures that define expected standards of behaviour and specify any additional characteristics, beyond those required by law, to which protection is provided, for example, in relation to political belief, social background and refugee status. The University's policies, practices and procedures specifically extend to all gender identities including trans, non-binary and gender non-conforming people.

## Policy Statement on Academic Freedom and Freedom of Speech

---

The University of Essex has a policy to ensure that the University can promote academic freedom and freedom of speech within the law for members of the University (including all staff and students of the University) and for external speakers.

The University of Essex is fully committed to promoting an environment in which intense inquiry and informed argument generates lasting ideas, and where members of its community have a responsibility both to challenge and to listen fully. The full policy is on our webpages:

**[essex.ac.uk/-/media/  
documents/about/governance/  
cop-freedom-of-speech.pdf](https://www.essex.ac.uk/-/media/documents/about/governance/cop-freedom-of-speech.pdf)**

## Alternative formats

---

This prospectus is available in large print, audio and Braille formats. Please contact our Enquiry Management Team for further information.

**[admit@essex.ac.uk](mailto:admit@essex.ac.uk)**

## Photography

---

Every effort has been made to obtain permission to reproduce the images contained herein. Please contact us with any image-related queries.

**[prospectus@essex.ac.uk](mailto:prospectus@essex.ac.uk)**

Designed and printed by CDS using computer-to-plate technology, on the latest reduced alcohol presses, significantly reducing the environmental impact of the printing process.

ISBN 978-1-909562-28-8  
© University of Essex 2024









**WE ARE ESSEX.** We're on the side of **people with guts** – Rebels with a cause. We're about people who **love to learn how**, but **want to challenge why**. But why do we have to stop here? Why can't we take it further, to the bit where it really gets interesting? We're about the people who huddle outside a class long after it's finished because there's much **more to be said**, more arguments to be had. We're about people who are bold enough to **challenge inequality** and the status quo. People who don't expect the world to change simply because they posted on social media or nodded when someone else spoke. At Essex you're not just a student, you're a member, someone with genuine licence to shape what goes on around you. To us it doesn't matter where you've come from. We're interested in how you want to grow and **what you want to change**. We're after people who will help us push the frontiers of knowledge. **Challenging convention** is in our DNA. All of which leaves you with a decision: are you going to sit and watch the world go by? Or do you have the **courage and energy** to shape it? We'll help you explore, question and create **powerful ideas**. We'll introduce you to people from every corner of the planet, a **genuinely global community** that lives, works and plays together. If you give up at the first hurdle, Essex isn't for you. If you want to be spoon-fed a degree, Essex isn't for you. If you are brave enough to have ideas and generous enough to share them, **WELCOME HOME.**

## VISIT US

### Colchester Open Days

- 15 June 2024
- 21 September 2024
- 26 October 2024

### Southend Open Day

- 12 October 2024

